

# SCHIP1 antibody



Catalog Number: 114996

## Product name

SCHIP1 antibody

Recommended Dilution:

WB: 1:200-1:2000

## Immunogen

[Human SCHIP1 Recombinant protein \(GST tag & His tag\)](#)

IHC: 1:20-1:200

IF: 1:20-1:200

## Specificity

Human, Mouse, Rat; other species not tested.

## Antibody description

SCHIP1 Rabbit Polyclonal antibody. Positive IF detected in HeLa cells. Positive IHC detected in mouse brain tissue, human cerebellum tissue. Positive WB detected in HeLa cells. Observed molecular weight by Western-blot: 53 kDa

## Preparation

This antibody was obtained by immunization of SCHIP1 recombinant protein (Accession Number: NM\_001197109). Purification method: Antigen affinity purified.

## Formulation

PBS with 0.1% sodium azide and 50% glycerol pH 7.3.

## Storage

Store at -20°C. DO NOT ALIQUOT

## Clonality

Polyclonal

## Ig Type

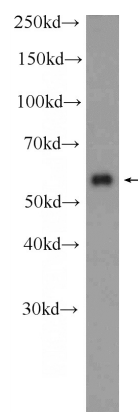
Rabbit IgG

## Applications

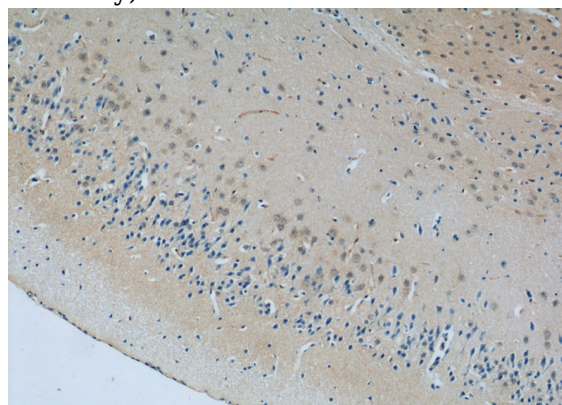
ELISA, WB, IHC, IF

## Dilutions

## Validations



HeLa cells were subjected to SDS PAGE followed by western blot with Catalog No:114996(SCHIP1 Antibody) at dilution of 1:600



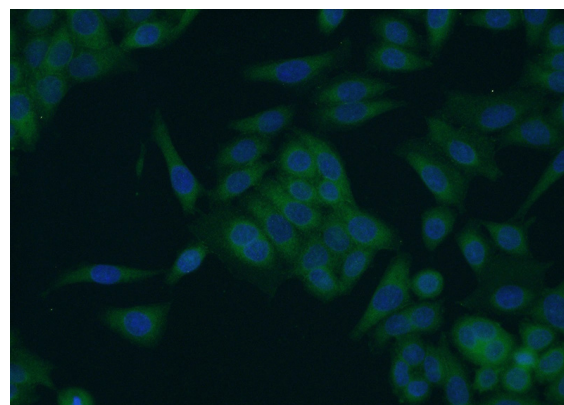
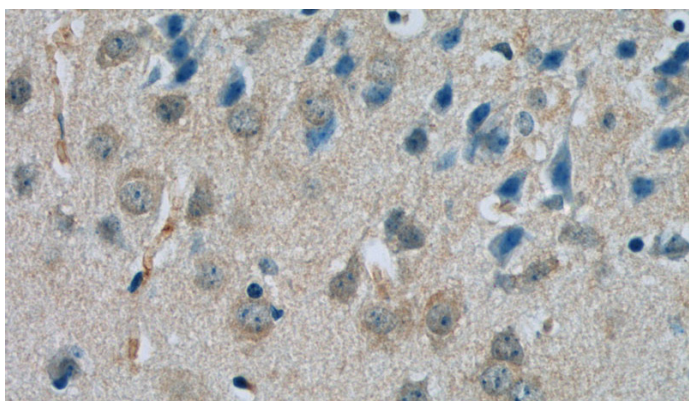
Immunohistochemistry of paraffin-embedded mouse brain tissue slide using Catalog No:114996(SCHIP1 Antibody) at dilution of 1:50 (under 10x lens)

# SCHIP1 antibody



Catalog Number: 114996

---



Immunohistochemistry of paraffin-embedded mouse brain tissue slide using Catalog No:114996(SCHIP1 Antibody) at dilution of 1:50 (under 40x lens)

Immunofluorescent analysis of HeLa cells using Catalog No:114996(SCHIP1 Antibody) at dilution of 1:50 and Alexa Fluor 488-conjugated AffiniPure Goat Anti-Rabbit IgG(H+L)