

Anti-Leptin (5C11) Mouse antibody



Catalog Number: 168386

Product name

Anti-Leptin (5C11) Mouse antibody

Clonality

Monoclonal

Specificity

Human

Ig Type

Mouse IgG2a

Antibody description

Leptin (5C11) Mouse monoclonal antibody

Applications

ELISA

Preparation

Antigen: Purified recombinant full length of human Leptin protein expressed in E.coli.

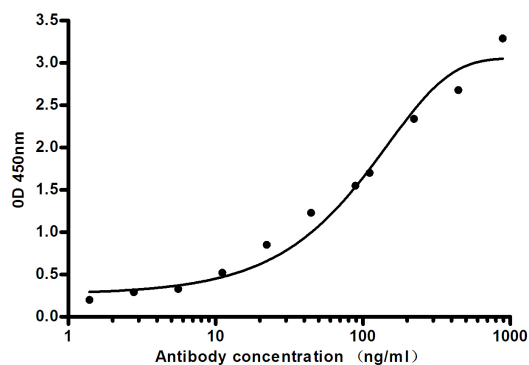
Formulation

Purified mouse monoclonal antibody in PBS(pH 7.4) containing with 0.03% Proclin300 and 50% glycerol.

Storage

Store at 4°C short term. Store at -20°C long term. Avoid freeze / thaw cycle.

Validations



Indirect ELISA assay for anti-Leptin mouse mAb. Antigen coating concentration: 4ug/ml.