

Anti-CNDP2 antibody



Catalog Number: 103586

Product name

Anti-CNDP2 antibody

Immunogen

[Mouse CNDP2 \(His Tag\) recombinant protein](#)

Specificity

Mouse CNDP2

Antibody description

Rabbit polyclonal to CNDP2

Preparation

Produced in rabbits immunized with purified, recombinant Mouse CNDP2 (rM CNDP2; NP_075638.2; Met 1-Asn 475). CNDP2 specific IgG was purified by Mouse CNDP2 affinity chromatography.

Formulation

0.2 µm filtered solution in PBS with 5% trehalose

Storage

This antibody can be stored at 2°C-8°C for one month without detectable loss of activity. Antibody products are stable for twelve months from date of receipt when stored at -20°C to -80°C.

Preservative-Free.

Sodium azide is recommended to avoid contamination (final concentration 0.05%-0.1%). It is toxic to cells and should be disposed of properly. Avoid repeated freeze-thaw cycles.

Clonality

Polyclonal

Ig Type

Rabbit IgG

Applications

ELISA, WB, IP

Dilutions

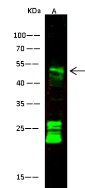
WB: 10-20 µg/mL

ELISA: 0.1-0.2 µg/mL

This antibody can be used at 0.1-0.2 µg/mL with the appropriate secondary reagents to detect Mouse CNDP2. The detection limit for Mouse CNDP2 is approximately 0.00245 ng/well.

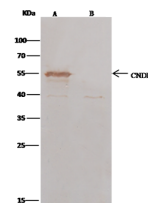
IP: 1-4 µg/mg of lysate

Validations



Items	Lanes	A
Sample (whole cell lysate)		293T
Sample Volume (µg/lane)		30
Gel		13% SDS-PAGE reducing gel
Recommended Concentration		10-20 µg/ml
Secondary Antibody		Dylight 800 labeled Antibody to Rabbit IgG (H+L) at 1/5000 dilution
Developed using Odyssey imaging system.		
Explanation		Predicted band size : 53 kDa Observed band size : 53 kDa Additional bands at : 25 kDa and 23 kDa (We are unsure as to the identity of these extra bands. They are possible non-specific bindings).

CNDP2 Antibody, Rabbit PAb, Antigen Affinity Purified, Western blot



Items	Lanes	A	B
Sample (whole cell lysate)		293T	
Sample quantity		0.5 mg	
IP antibody type		mCNDP2-IP02	Rabbit blank IgG
IP antibody quantity		2 µg	
Protein G agarose		15 µl of 50% Protein G Agarose	
Gel		13% SDS-PAGE reducing gel	
Primary antibody		mCNDP2 antibody at 5 µg/ml	
Secondary antibody		Clear-Blue® IP Detection Reagent (HRP) at 1:1000 dilution	

CNDP2 Antibody, Rabbit PAb, Antigen Affinity Purified