

# SH3BGRL2 antibody



Catalog Number: 115186

## Product name

SH3BGRL2 antibody

## Immunogen

[Human SH3BGRL2 Recombinant protein \(GST tag & His tag\)](#)

## Specificity

Human, Mouse; other species not tested.

## Antibody description

SH3BGRL2 Rabbit Polyclonal antibody. Positive WB detected in human placenta tissue, human brain tissue, mouse liver tissue. Positive IHC detected in human liver tissue, human placenta tissue. Observed molecular weight by Western-blot: 12-17kd

## Preparation

This antibody was obtained by immunization of SH3BGRL2 recombinant protein (Accession Number: NM\_031469). Purification method: Antigen affinity purified.

## Formulation

PBS with 0.02% sodium azide and 50% glycerol pH 7.3.

## Storage

Store at -20°C. DO NOT ALIQUOT

## Clonality

Polyclonal

## Ig Type

Rabbit IgG

## Applications

ELISA, WB, IHC

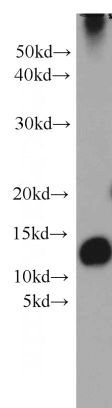
## Dilutions

Recommended Dilution:

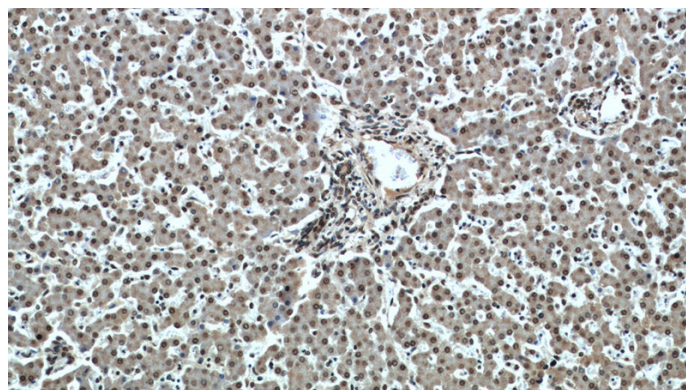
WB: 1:500-1:5000

IHC: 1:20-1:200

## Validations



human placenta tissue were subjected to SDS PAGE followed by western blot with Catalog No:115186(SH3BGRL2 antibody) at dilution of 1:1000



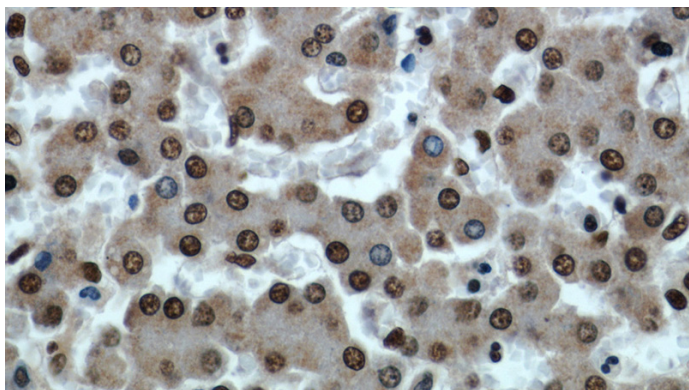
Immunohistochemical of paraffin-embedded human liver using Catalog No:115186(SH3BGRL2 antibody) at dilution of 1:50 (under 10x lens)

# SH3BGRL2 antibody



Catalog Number: 115186

---



Immunohistochemical of paraffin-embedded human liver using Catalog No:115186(SH3BGRL2 antibody) at dilution of 1:50 (under 40x lens)