

Anti-MEK1/2 Rabbit antibody



Catalog Number: 167276

Product name

WB: 1/5000

Anti-MEK1/2 Rabbit antibody

IHC: 1/100

Specificity

ICC/IF: 1/20

Human, Mouse, Rat

FC: 1/20

Antibody description

IP: 1/20

MEK1/2 Rabbit polyclonal antibody

Validations

Preparation

Antigen: Recombinant protein of human MEK1/2

Formulation

Supplied in 50nM Tris-Glycine(pH 7.4), 0.15M NaCl, 40%Glycerol, 0.01% sodium azide and 0.05% BSA.

Storage

Store at -20°C. Stable for 12 months from date of receipt.

Clonality

Polyclonal

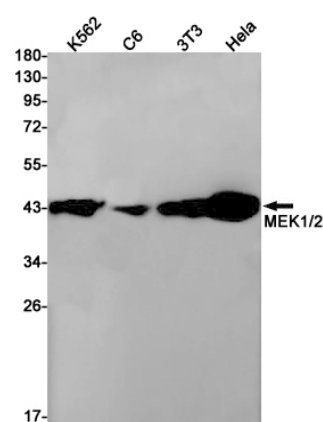
Ig Type

Rabbit IgG

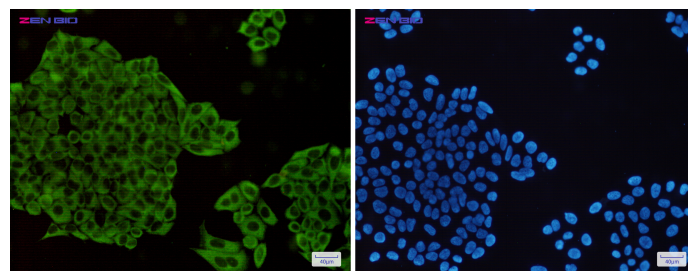
Applications

WB, IHC-P, ICC/IF, FC, IP

Dilutions



Western blot detection of MEK1/2 in K562,C6,3T3,HeLa cell lysates using MEK1/2 Rabbit pAb(1:1000 diluted).Predicted band size:43kDa.Observed band size:43kDa.



Immunocytochemistry of MEK1/2(green) in HeLa cells using MEK1/2 Rabbit pAb at dilution 1/50, and DAPI(blue)