

MYLPF antibody



Catalog Number: 112976

Product name

MYLPF antibody

Recommended Dilution:

WB: 1:500-1:5000

Immunogen

IHC: 1:20-1:200

[Human MYLPF Recombinant protein \(GST tag & His tag\)](#)

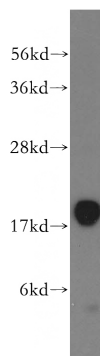
Validations

Specificity

Human, Mouse, Rat; other species not tested.

Antibody description

MYLPF Rabbit Polyclonal antibody. Positive WB detected in mouse skeletal muscle tissue, mouse heart tissue. Positive IHC detected in human skeletal muscle tissue. Observed molecular weight by Western-blot: 19kd



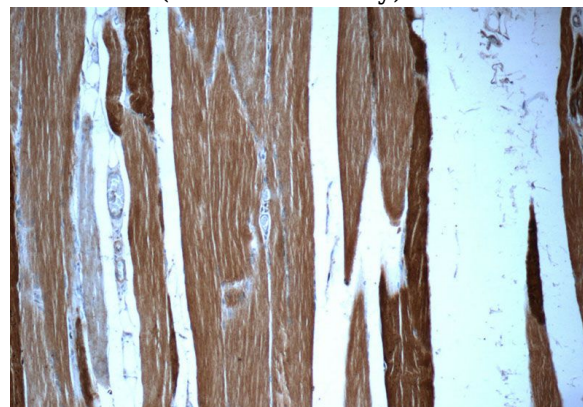
Preparation

This antibody was obtained by immunization of MYLPF recombinant protein (Accession Number: NM_013292). Purification method: Antigen affinity purified.

mouse skeletal muscle tissue were subjected to SDS PAGE followed by western blot with Catalog No:112976(MYLPF antibody) at dilution of 1:400

Formulation

PBS with 0.02% sodium azide and 50% glycerol pH 7.3.



Storage

Store at -20°C. DO NOT ALIQUOT

Clonality

Polyclonal

Ig Type

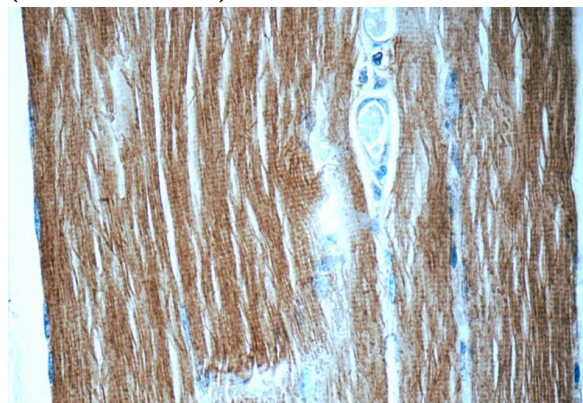
Rabbit IgG

Applications

ELISA, WB, IHC

Dilutions

Immunohistochemistry of paraffin-embedded human skeletal muscle tissue slide using Catalog No:112976(MYLPF Antibody) at dilution of 1:50 (under 10x lens)



MYLPF antibody



Catalog Number: 112976

Immunohistochemistry of paraffin-embedded
human skeletal muscle tissue slide using Catalog

No:112976(MYLPF Antibody) at dilution of 1:50
(under 40x lens)