

# EIF1AY antibody



Catalog Number: 110176

## Product name

EIF1AY antibody

Recommended Dilution:

WB: 1:200-1:2000

## Immunogen

[Human EIF1AY Recombinant protein \(GST tag & His tag\)](#)

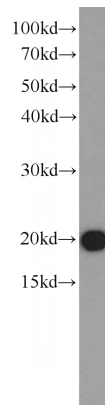
IHC: 1:20-1:200

IF: 1:20-1:200

## Specificity

Human; other species not tested.

## Validations



## Antibody description

EIF1AY Rabbit Polyclonal antibody. Positive WB detected in MCF7 cells, HEK-293 cells. Positive IHC detected in human prostate cancer tissue. Positive IF detected in MCF-7 cells. Observed molecular weight by Western-blot: 16-20 kDa

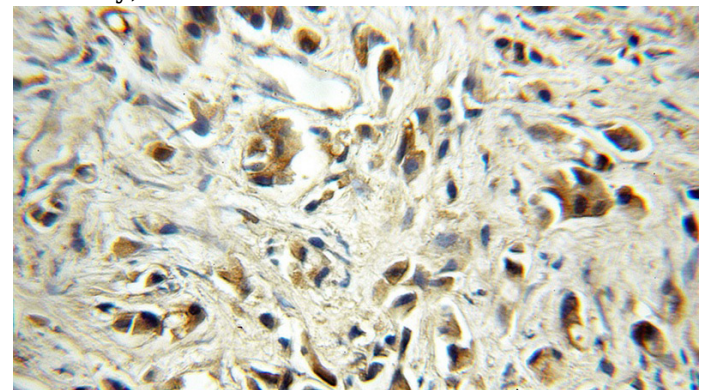
## Preparation

This antibody was obtained by immunization of EIF1AY recombinant protein (Accession Number: NM\_004681). Purification method: Antigen affinity purified.

MCF7 cells were subjected to SDS PAGE followed by western blot with Catalog No:110176(EIF1AY antibody) at dilution of 1:800

## Formulation

PBS with 0.1% sodium azide and 50% glycerol pH 7.3.



## Storage

Store at -20°C. DO NOT ALIQUOT

## Clonality

Polyclonal

Immunohistochemical of paraffin-embedded human prostate cancer using Catalog No:110176(EIF1AY antibody) at dilution of 1:50 (under 10x lens)

## Ig Type

Rabbit IgG

## Applications

ELISA, WB, IHC, IF

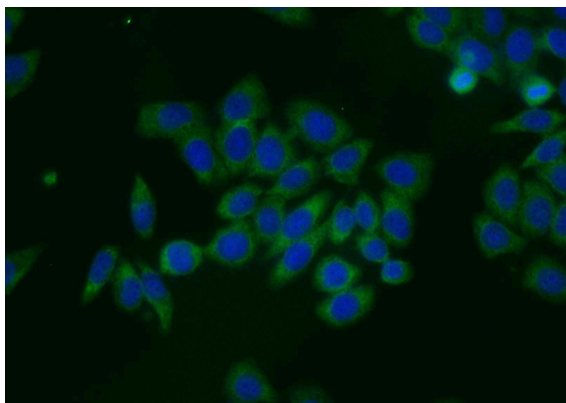
## Dilutions

# EIF1AY antibody



Catalog Number: 110176

---



Immunofluorescent analysis of MCF-7 cells using Catalog No:110176(EIF1AY Antibody) at dilution of 1:50 and Alexa Fluor 488-conjugated AffiniPure Goat Anti-Rabbit IgG(H+L)