

Anti-Cleaved PARP1 Rabbit antibody



Catalog Number: 166876

Product name

Anti-Cleaved PARP1 Rabbit antibody

Specificity

Human

Antibody description

Cleaved PARP1 Rabbit polyclonal antibody

Preparation

Antigen: A synthetic peptide of human Cleaved PARP1

Formulation

Supplied in 50nM Tris-Glycine(pH 7.4), 0.15M NaCl, 40%Glycerol, 0.01% sodium azide and 0.05% BSA.

Storage

Store at -20°C. Stable for 12 months from date of receipt.

Clonality

Polyclonal

Ig Type

Rabbit IgG

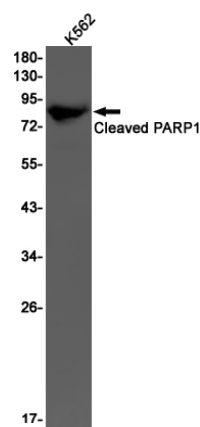
Applications

WB

Dilutions

WB: 1/1000

Validations



Western blot detection of Cleaved PARP1 in K562 cell lysates using Cleaved PARP1 Rabbit pAb(1:1000 diluted). Predicted band size:113kDa. Observed band size:89kDa.