

# MSRB2 antibody



Catalog Number: 112876

## Product name

MSRB2 antibody

Recommended Dilution:

WB: 1:500-1:5000

## Immunogen

[Human MSRB2 Recombinant protein \(GST tag & His tag\)](#)

IHC: 1:20-1:200

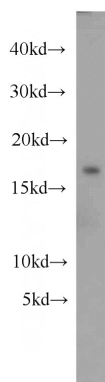
## Validations

## Specificity

human, mouse, rat; other species not tested.

## Antibody description

MSRB2 Rabbit Polyclonal antibody. Positive WB detected in mouse heart tissue, human heart tissue. Positive IHC detected in human kidney. Observed molecular weight by Western-blot: 19kd



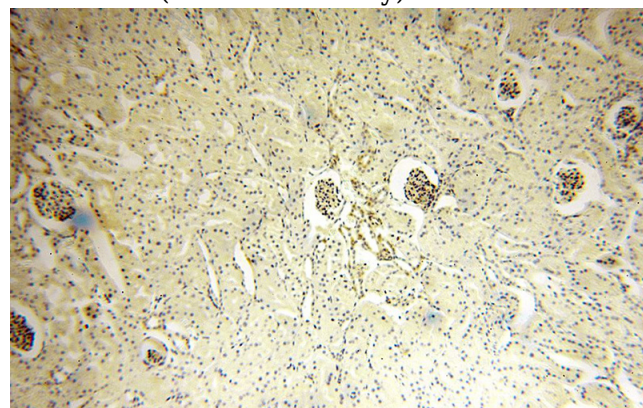
## Preparation

This antibody was obtained by immunization of MSRB2 recombinant protein (Accession Number: NM\_012228). Purification method: Antigen affinity purified.

mouse heart tissue were subjected to SDS PAGE followed by western blot with Catalog No:112876(MSRB2 antibody) at dilution of 1:1000

## Formulation

PBS with 0.02% sodium azide and 50% glycerol pH 7.3.



## Storage

Store at -20°C. DO NOT ALIQUOT

## Clonality

Polyclonal

## Ig Type

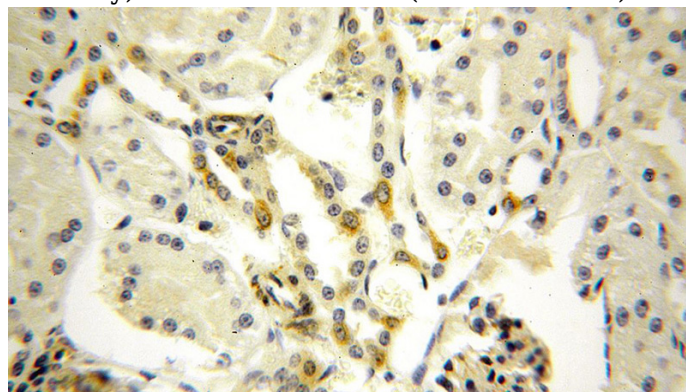
Rabbit IgG

## Applications

ELISA, WB, IHC

## Dilutions

Immunohistochemical of paraffin-embedded human kidney using Catalog No:112876(MSRB2 antibody) at dilution of 1:100 (under 10x lens)



# MSRB2 antibody



Catalog Number: 112876

---

Immunohistochemical of paraffin-embedded

human kidney using Catalog No:112876(MSRB2 antibody) at dilution of 1:100 (under 40x lens)