

General Information

Gene Name Synonym

TGF-beta type II receptor; Transforming growth factor-beta receptor type II

Protein Construction

A DNA sequence encoding the rhesus TGFBR2 (NP_001248080.1) (Met1-Arg159) was expressed with the Fc region of human IgG1 at the C-terminus.

Organism

Rhesus

Expression Host

Human Cells

QC Testing

Activity

1. Measured by its binding ability in a functional ELISA.
 2. Immobilized Rhesus TGFBR2-His (Cat:504900) at 10 µg/mL (100 µL/well) can bind Rhesus TGFBR2-Fc.
- The EC₅₀ of Rhesus TGFBR2-Fc is 28-56 ng/mL.

Purity

> 95 % as determined by SDS-PAGE

Endotoxin

< 1.0 EU per µg of the protein as determined by the LAL method

Stability

Samples are stable for up to twelve months from date of receipt at -70°C

Predicted N terminal

Ile 24

Molecular Mass

The recombinant rhesus TGFBR2 comprises 377 amino acids and has a calculated molecular mass of 42.4 KDa.

Formulation

- Lyophilized from sterile PBS, pH 7.4
1. 5 % trehalose and mannitol are added as protectants before lyophilization.
 2. Please contact us for any concerns or special requirements.

Usage Guide

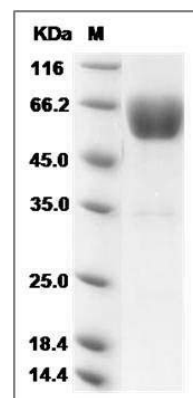
Storage

Store it under sterile conditions at -20°C to -80°C. It is recommended that the protein be aliquoted for optimal storage. Avoid repeated freeze-thaw cycles.

Reconstitution

Adding sterile water, prepare a stock solution of 0.25 mg/ml. Concentration is measured by UV-Vis.

SDS-PAGE



Cynomolgus TGFBR2 Protein (Fc Tag) SDS-PAGE