

Lactoferrin antibody



Catalog Number: 112266

Product name

Lactoferrin antibody

IP: 1:200-1:2000

IHC: 1:20-1:200

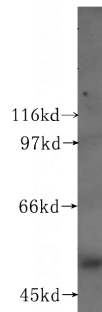
Specificity

Human; other species not tested.

Validations

Antibody description

Lactoferrin Rabbit Polyclonal antibody. Positive WB detected in HEK-293 cells, human pancreas tissue. Positive IP detected in HeLa cells. Positive IHC detected in human liver tissue, human prostate hyperplasia tissue. Observed molecular weight by Western-blot: 51 kDa



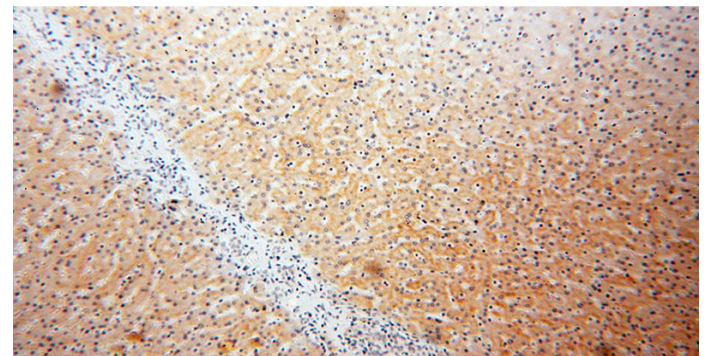
Preparation

This antibody was obtained by immunization of Lactoferrin recombinant protein (Accession Number: NM_002343). Purification method: Antigen affinity purified.

HEK-293 cells were subjected to SDS PAGE followed by western blot with Catalog No:112266(LTF antibody) at dilution of 1:500

Formulation

PBS with 0.1% sodium azide and 50% glycerol pH 7.3.



Storage

Store at -20°C. DO NOT ALIQUOT

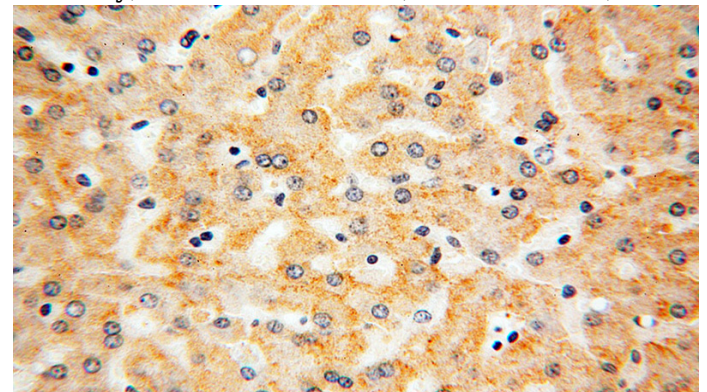
Clonality

Polyclonal

Immunohistochemical of paraffin-embedded human liver using Catalog No:112266(LTF antibody) at dilution of 1:50 (under 10x lens)

Ig Type

Rabbit IgG



Applications

ELISA, IHC, WB, IP

Dilutions

Recommended Dilution:

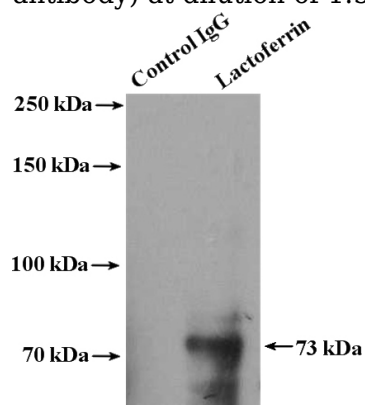
WB: 1:200-1:2000

Immunohistochemical of paraffin-embedded human liver using Catalog No:112266(LTF

Lactoferrin antibody

Catalog Number: 112266

antibody) at dilution of 1:50 (under 40x lens)



IP Result of anti-LTF (IP:Catalog No:112266, 4ug; Detection:Catalog No:112266 1:600) with HeLa cells lysate 4000ug.