

Anti-Cyclophilin B (6H1) Mouse antibody



Catalog Number: 168166

Product name

Anti-Cyclophilin B (6H1) Mouse antibody

Specificity

Human, Rat, Mouse

Antibody description

Cyclophilin B (6H1) Mouse monoclonal antibody

Preparation

Antigen: Synthetic peptide conjugated to KLH.

Formulation

PBS(pH 7.4) containing with 0.02% sodium azide and 50% glycerol.

Storage

Store at 4°C short term. Store at -20°C long term.
Avoid freeze / thaw cycle.

Clonality

Monoclonal

Ig Type

Mouse IgG1

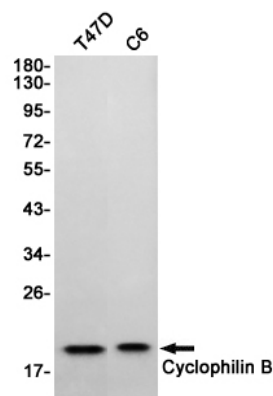
Applications

WB

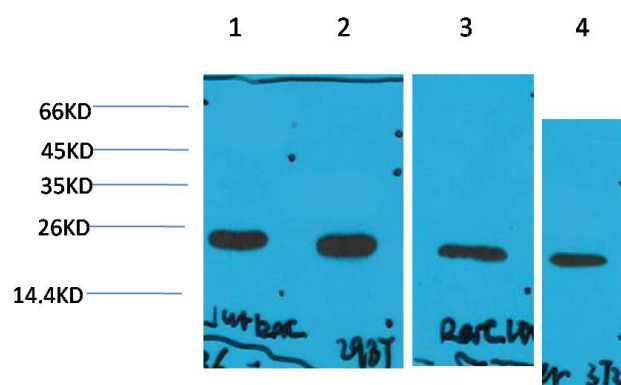
Dilutions

WB: 1/1,000-2,000

Validations



Western blot detection of Cyclophilin B in T47D, C6 cell lysates using Cyclophilin B (6H1) Mouse mAb (1:1000 diluted). Predicted band size: 21 kDa. Observed band size: 21 kDa.



Western blot analysis of 1) Jurkat, 2) 293T, 3) Rat Liver Tissue, 4) 3T3 with Cyclophilin B Mouse mAb diluted at 1:2,000.