

TOE1 antibody



Catalog Number: 116166

Product name

TOE1 antibody

IHC: 1:20-1:200

IF: 1:10-1:100

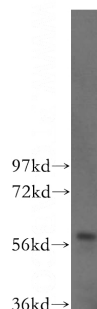
Specificity

Human, Mouse, Rat; other species not tested.

Antibody description

TOE1 Rabbit Polyclonal antibody. Positive IF detected in HepG2 cells. Positive IHC detected in human colon cancer tissue. Positive WB detected in HeLa cells, mouse thymus tissue. Observed molecular weight by Western-blot: 57kd

Validations



Preparation

This antibody was obtained by immunization of TOE1 recombinant protein (Accession Number: NM_025077). Purification method: Antigen affinity purified.

HeLa cells were subjected to SDS PAGE followed by western blot with Catalog No:116166(TOE1 antibody) at dilution of 1:500

Formulation

PBS with 0.02% sodium azide and 50% glycerol pH 7.3.

Storage

Store at -20°C. DO NOT ALIQUOT

Clonality

Polyclonal

Ig Type

Rabbit IgG

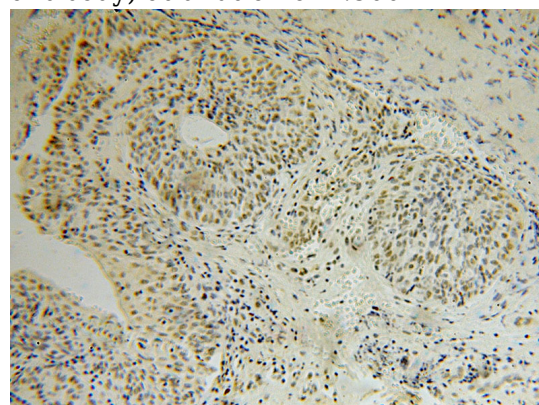
Applications

ELISA, WB, IHC, IF

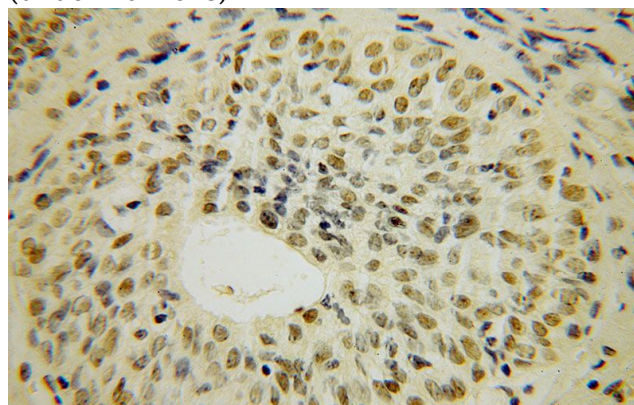
Dilutions

Recommended Dilution:

WB: 1:200-1:2000



Immunohistochemical of paraffin-embedded human colon cancer using Catalog No:116166(TOE1 antibody) at dilution of 1:50 (under 10x lens)



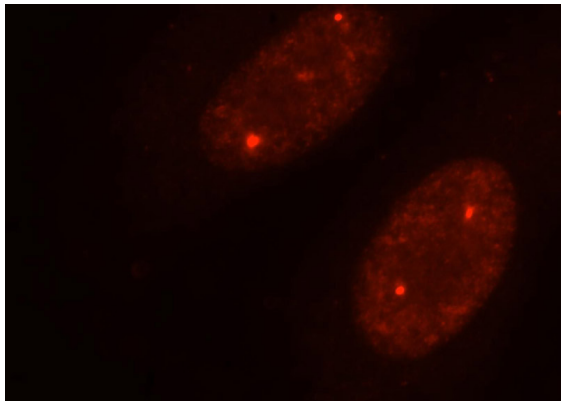
Immunohistochemical of paraffin-embedded

TOE1 antibody



Catalog Number: 116166

human colon cancer using Catalog
No:116166(TOE1 antibody) at dilution of 1:50
(under 40x lens)



Immunofluorescent analysis of HepG2 cells, using
TOE1 antibody Catalog No:116166 at 1:25 dilution
and Rhodamine-labeled goat anti-rabbit IgG (red).