

# Human S100A4/CAPL/MTS1 (His tag) recombinant protein



Catalog Number: 519156

## General Information

### Gene Name Synonym

Protein S100-A4; Calvasculin; Metastasin;  
Placental calcium-binding protein; Protein Mts1;  
S100 calcium-binding protein A4; S100A4; CAPL;  
MTS1

### Protein Construction

A DNA sequence encoding the Human  
S100A4/CAPL/MTS1 Met1-Lys101 is expressed  
with a 6His at the C-terminus.

### Organism

Human

### Expression Host

E. coli

## QC Testing

### Purity

>95% as determined by SDS-PAGE.

### Endotoxin

<1.0 EU per  $\mu\text{g}$  protein as determined by the LAL  
method.

### Stability

Store for up to 12 months at  $-20^{\circ}\text{C}$  to  $-80^{\circ}\text{C}$  as  
lyophilized powder. Aliquots of reconstituted  
samples are stable at  $< -20^{\circ}\text{C}$  for 5 months.

## Formulation

Lyophilized from a  $0.2\ \mu\text{m}$  filtered solution of PBS,  
 $\text{pH}7.4$ .

## Usage Guide

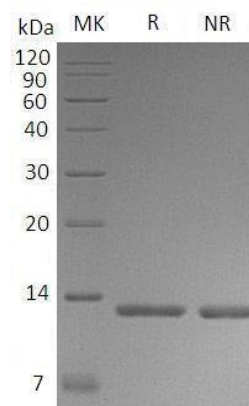
### Storage

Lyophilized protein should be stored at  $< -20^{\circ}\text{C}$ ,  
though stable at room temperature for 3 weeks.  
Reconstituted protein solution can be stored at  
 $4-7^{\circ}\text{C}$  for 2-7 days.

### Reconstitution

Always centrifuge tubes before opening. Do not  
mix by vortex or pipetting. It is not recommended  
to reconstitute to a concentration less than  
 $100\ \mu\text{g}/\text{ml}$ . Dissolve the lyophilized protein in  
ddH<sub>2</sub>O. Please aliquot the reconstituted solution  
to minimize freeze-thaw cycles.

## SDS-PAGE



Human S100A4/CAPL/MTS1 (His tag)  
recombinant protein