

WDR16 antibody



Catalog Number: 116856

Product name

WDR16 antibody

Specificity

Human, Mouse, Rat; other species not tested.

Antibody description

WDR16 Rabbit Polyclonal antibody. Positive IHC detected in human testis tissue, human liver cancer tissue.

Preparation

This antibody was obtained by immunization of WDR16 recombinant protein (Accession Number: NM_145054). Purification method: Antigen affinity purified.

Formulation

PBS with 0.1% sodium azide and 50% glycerol pH 7.3.

Storage

Store at -20°C. DO NOT ALIQUOT

Clonality

Polyclonal

Ig Type

Rabbit IgG

Applications

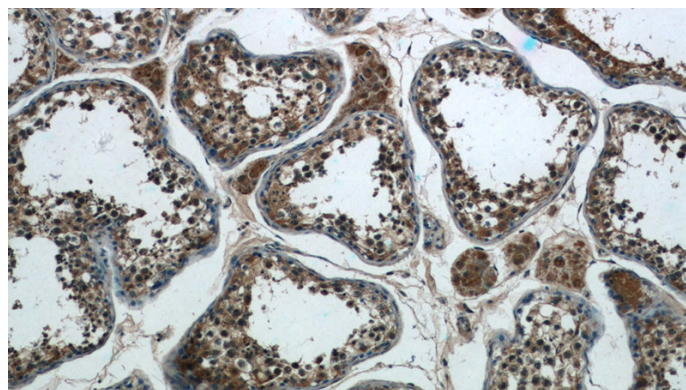
ELISA, IHC

Dilutions

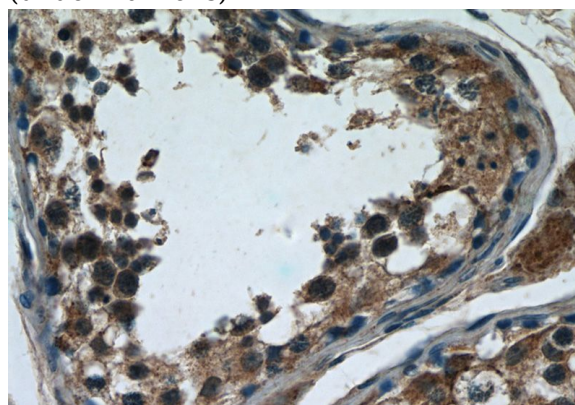
Recommended Dilution:

IHC: 1:20-1:200

Validations



Immunohistochemistry of paraffin-embedded human testis tissue slide using Catalog No:116856(WDR16 Antibody) at dilution of 1:50 (under 10x lens)



Immunohistochemistry of paraffin-embedded human testis tissue slide using Catalog No:116856(WDR16 Antibody) at dilution of 1:50 (under 40x lens)