

**Product name**

SNRPA antibody

**Specificity**

Human, Mouse, Rat; other species not tested.

**Antibody description**

SNRPA Rabbit Polyclonal antibody. Positive WB detected in HeLa cells, A431 cells, HEK-293 cells, MCF-7 cells. Positive IHC detected in human cervical cancer tissue. Observed molecular weight by Western-blot: 31 kDa

**Preparation**

This antibody was obtained by immunization of SNRPA recombinant protein (Accession Number: NM\_004596). Purification method: Antigen affinity purified.

**Formulation**

PBS with 0.1% sodium azide and 50% glycerol pH 7.3.

**Storage**

Store at -20°C. DO NOT ALIQUOT

**Clonality**

Polyclonal

**Ig Type**

Rabbit IgG

**Applications**

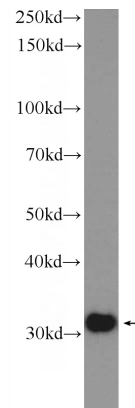
ELISA, WB, IHC

**Dilutions**

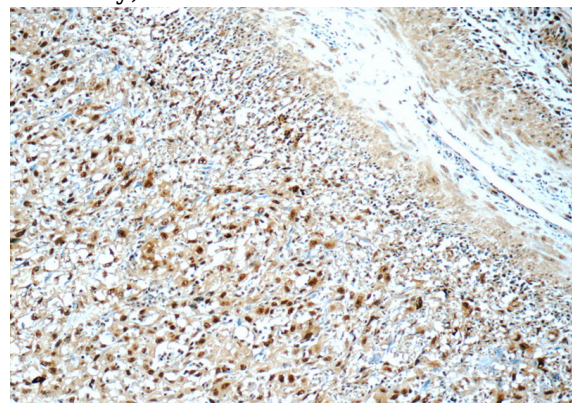
Recommended Dilution:

WB: 1:200-1:2000

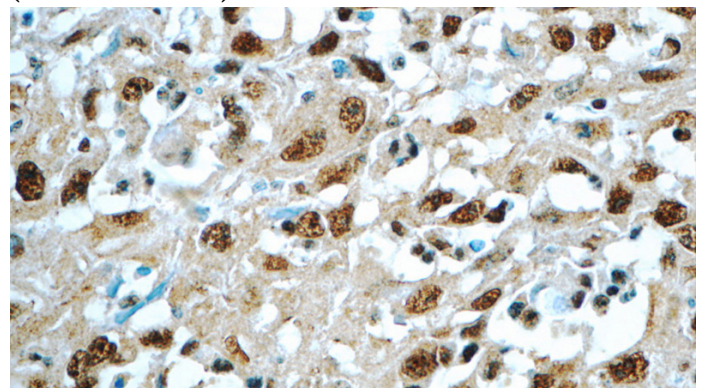
IHC: 1:20-1:200

**Validations**

HeLa cells were subjected to SDS PAGE followed by western blot with Catalog No:115456(SNRPA Antibody) at dilution of 1:600



Immunohistochemistry of paraffin-embedded human cervical cancer tissue slide using Catalog No:115456(SNRPA Antibody) at dilution of 1:50 (under 10x lens)



Immunohistochemistry of paraffin-embedded human cervical cancer tissue slide using Catalog No:115456(SNRPA Antibody) at dilution of 1:50

# SNRPA antibody



Catalog Number: 115456

---

(under 40x lens)