

# MPO antibody



Catalog Number: 112746

## Product name

MPO antibody

IP: 1:200-1:2000

IHC: 1:20-1:200

## Specificity

Human; other species not tested.

## Antibody description

MPO Rabbit Polyclonal antibody. Positive IP detected in HeLa cells. Positive WB detected in HeLa cells, MCF7 cells, U-937 cells. Positive IHC detected in human liver tissue. Observed molecular weight by Western-blot: 59 kDa

## Preparation

This antibody was obtained by immunization of MPO recombinant protein (Accession Number: NM\_000250). Purification method: Antigen affinity purified.

## Formulation

PBS with 0.02% sodium azide and 50% glycerol pH 7.3.

## Storage

Store at -20°C. DO NOT ALIQUOT

## Clonality

Polyclonal

## Ig Type

Rabbit IgG

## Applications

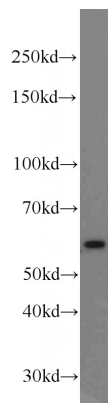
ELISA, IHC, WB, IP

## Dilutions

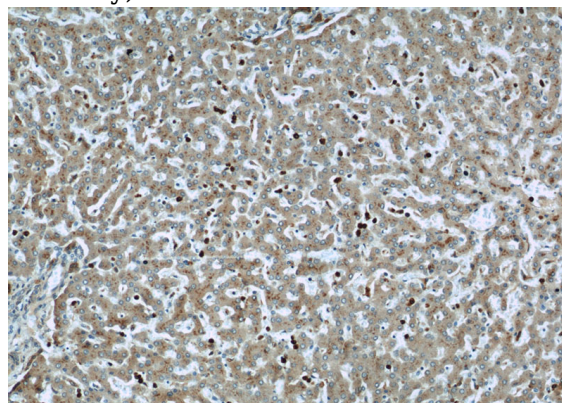
Recommended Dilution:

WB: 1:200-1:2000

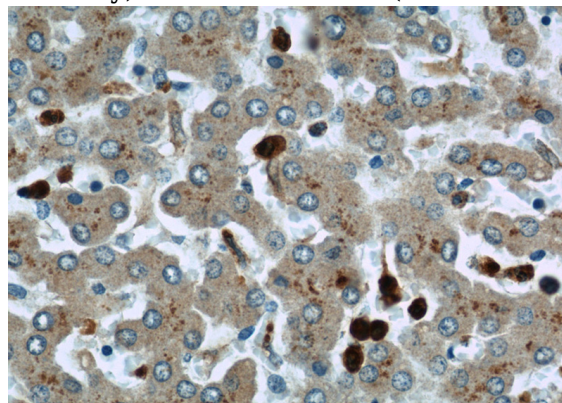
## Validations



HeLa cells were subjected to SDS PAGE followed by western blot with Catalog No:112746(MPO antibody) at dilution of 1:600



Immunohistochemical of paraffin-embedded human liver using Catalog No:112746(MPO antibody) at dilution of 1:50 (under 10x lens)



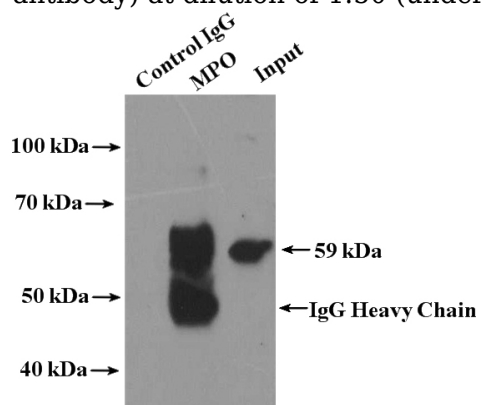
Immunohistochemical of paraffin-embedded human liver using Catalog No:112746(MPO

# MPO antibody

Catalog Number: 112746

---

antibody) at dilution of 1:50 (under 40x lens)



IP Result of anti-MPO (IP:Catalog No:112746, 4ug;  
Detection:Catalog No:112746 1:600) with HeLa  
cells lysate 1600ug.