

NME1 antibody



Catalog Number: 113246

Product name

NME1 antibody

WB: 1:500-1:5000

IP: 1:200-1:2000

Specificity

Human, Mouse, Rat; other species not tested.

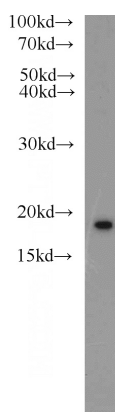
IHC: 1:20-1:200

IF: 1:20-1:200

Antibody description

NME1 Rabbit Polyclonal antibody. Positive IP detected in A549 cells. Positive WB detected in HeLa cells, A549 cells, MCF7 cells. Positive IF detected in MCF-7 cells. Positive IHC detected in human lung cancer tissue, human pancreas cancer tissue. Observed molecular weight by Western-blot: 16-20 kDa

Validations



Preparation

This antibody was obtained by immunization of NME1 recombinant protein (Accession Number: NM_000269). Purification method: Antigen affinity purified.

HeLa cells were subjected to SDS PAGE followed by western blot with Catalog No:113246(NME1 antibody) at dilution of 1:1500

Formulation

PBS with 0.1% sodium azide and 50% glycerol pH 7.3.

Storage

Store at -20°C. DO NOT ALIQUOT

Clonality

Polyclonal

Ig Type

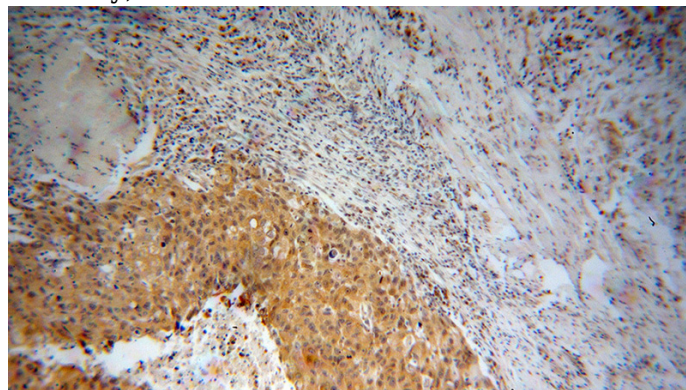
Rabbit IgG

Applications

ELISA, WB, IHC, IF, IP

Dilutions

Recommended Dilution:

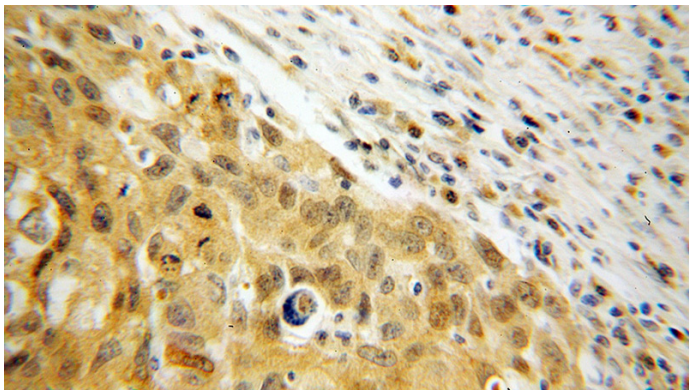


Immunohistochemical of paraffin-embedded human lung cancer using Catalog No:113246(NME1 antibody) at dilution of 1:100 (under 10x lens)

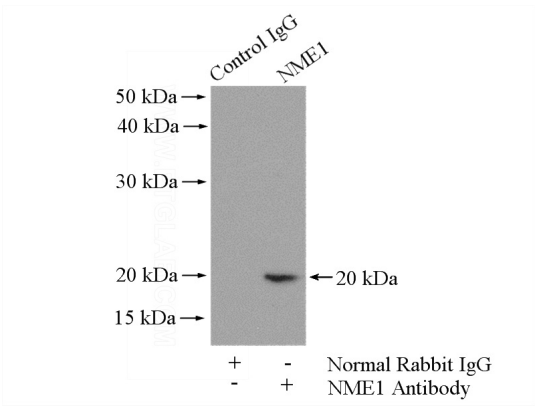
NME1 antibody



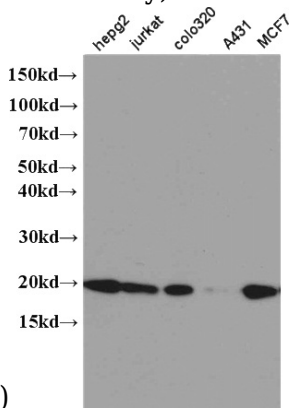
Catalog Number: 113246



Immunohistochemical of paraffin-embedded human lung cancer using Catalog No:113246(NME1 antibody) at dilution of 1:100

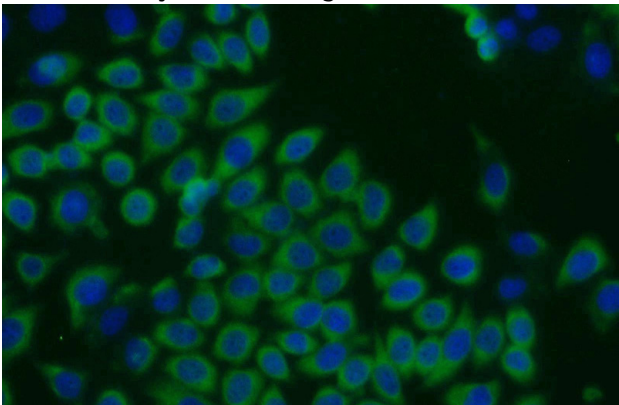


IP Result of anti-NME1 (IP:Catalog No:113246, 4ug; Detection:Catalog No:113246 1:500) with A549 cells lysate 2800ug.



(under 40x lens)

WB result of Catalog No:(NME1 antibody).



Immunofluorescent analysis of MCF-7 cells using Catalog No:113246(NME1 Antibody) at dilution of 1:50 and Alexa Fluor 488-conjugated AffiniPure Goat Anti-Rabbit IgG(H+L)