

# ITGB1BP1 antibody



Catalog Number: 111946

## Product name

ITGB1BP1 antibody

## Immunogen

[Human ITGB1BP1 Recombinant protein \(GST tag & His tag\)](#)

## Specificity

Human, Mouse, Rat; other species not tested.

## Antibody description

ITGB1BP1 Rabbit Polyclonal antibody. Positive IHC detected in human heart tissue, human colon tissue. Positive IF detected in PC-3 cells. Positive IP detected in mouse thymus tissue. Positive WB detected in PC-3 cells, human brain tissue, mouse thymus tissue. Observed molecular weight by Western-blot: 22 kDa

## Preparation

This antibody was obtained by immunization of ITGB1BP1 recombinant protein (Accession Number: NM\_001319067). Purification method: Antigen affinity purified.

## Formulation

PBS with 0.02% sodium azide and 50% glycerol pH 7.3.

## Storage

Store at -20°C. DO NOT ALIQUOT

## Clonality

Polyclonal

## Ig Type

Rabbit IgG

## Applications

ELISA, WB, IHC, IF, IP

## Dilutions

Recommended Dilution:

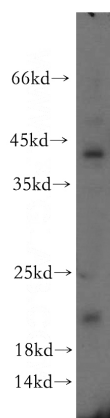
WB: 1:200-1:1000

IP: 1:200-1:1000

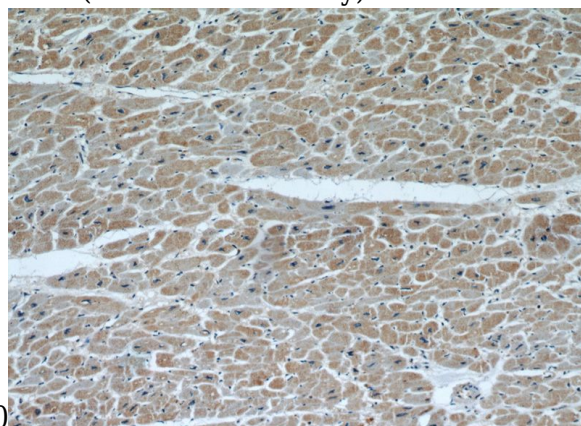
IHC: 1:20-1:200

IF: 1:10-1:100

## Validations



PC-3 cells were subjected to SDS PAGE followed by western blot with Catalog No:111946(ITGB1BP1 antibody) at dilution of

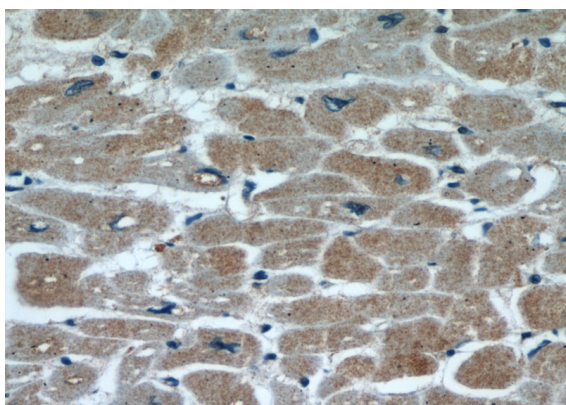


Immunohistochemical of paraffin-embedded human heart using Catalog No:111946(ITGB1BP1 antibody) at dilution of 1:50 (under 10x lens)

# ITGB1BP1 antibody

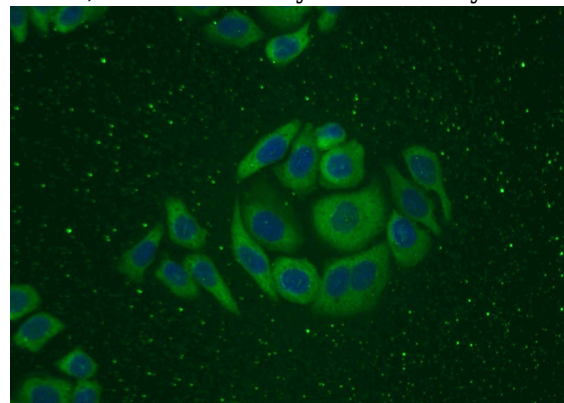


Catalog Number: 111946



Immunohistochemical of paraffin-embedded human heart using Catalog No:111946(ITGB1BP1 antibody) at dilution of 1:50 (under 40x lens)

IP Result of anti-ITGB1BP1 (IP:Catalog No:111946, 4ug; Detection:Catalog No:111946 1:300) with mouse thymus tissue lysate 2800ug.



Immunofluorescent analysis of PC-3 cells using Catalog No:111946(ITGB1BP1 Antibody) at dilution of 1:25 and Alexa Fluor 488-conjugated AffiniPure Goat Anti-Rabbit IgG(H+L)

