

LARP1 antibody



Catalog Number: 112146

Product name

LARP1 antibody

Immunogen

[Human LARP1 Recombinant protein \(GST tag & His tag\)](#)

Specificity

Human, Mouse, Rat; other species not tested.

Antibody description

LARP1 Rabbit Polyclonal antibody. Positive WB detected in HeLa cells, HepG2 cells, mouse brain tissue, mouse heart tissue, mouse testis tissue. Positive IF detected in HepG2 cells. Observed molecular weight by Western-blot: 140-150 kDa

Preparation

This antibody was obtained by immunization of LARP1 recombinant protein (Accession Number: BC033856). Purification method: Antigen affinity purified.

Formulation

PBS with 0.02% sodium azide and 50% glycerol pH 7.3.

Storage

Store at -20°C. DO NOT ALIQUOT

Clonality

Polyclonal

Ig Type

Rabbit IgG

Applications

ELISA, WB, IF

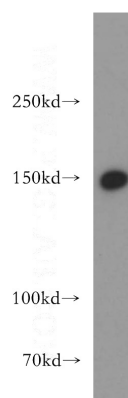
Dilutions

Recommended Dilution:

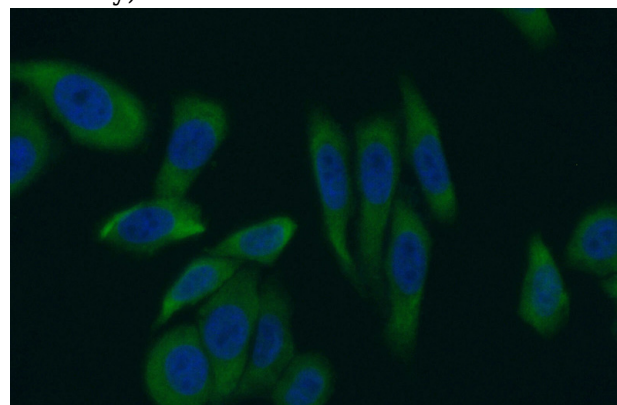
WB: 1:500-1:5000

IF: 1:50-1:500

Validations



HeLa cells were subjected to SDS PAGE followed by western blot with Catalog No:112146(LARP1 antibody) at dilution of 1:500



Immunofluorescent analysis of (10% Formaldehyde) fixed HepG2 cells using Catalog No:112146(LARP1 Antibody) at dilution of 1:50 and Alexa Fluor 488-conjugated AffiniPure Goat Anti-Rabbit IgG(H+L)