

# LRRC52 antibody



Catalog Number: 112336

## Product name

LRRC52 antibody

## Immunogen

[Human LRRC52 Recombinant protein \(His tag\)](#)

## Specificity

Human, Mouse; other species not tested.

## Antibody description

LRRC52 Rabbit Polyclonal antibody. Positive WB detected in mouse skeletal muscle tissue. Observed molecular weight by Western-blot: 45 kDa

## Preparation

This antibody was obtained by immunization of LRRC52 recombinant protein (Accession Number: NM\_001005214). Purification method: Antigen affinity purified.

## Formulation

PBS with 0.1% sodium azide and 50% glycerol pH 7.3.

## Storage

Store at -20°C. DO NOT ALIQUOT

## Clonality

Polyclonal

## Ig Type

Rabbit IgG

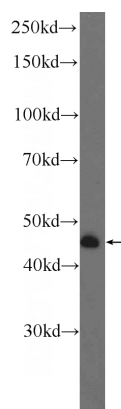
## Applications

ELISA, WB

## Dilutions

Recommended Dilution:  
WB: 1:200-1:2000

## Validations



mouse skeletal muscle tissue were subjected to SDS PAGE followed by western blot with Catalog No:112336(LRRC52 Antibody) at dilution of 1:600