

Gelsolin antibody



Catalog Number: 110936

Product name

Gelsolin antibody

Immunogen

[Human Gelsolin Recombinant protein \(GST tag & His tag\)](#)

Specificity

Human, Mouse, Rat; other species not tested.

Antibody description

Gelsolin Rabbit Polyclonal antibody. Positive WB detected in HeLa cells, human liver tissue. Positive IHC detected in human prostate cancer tissue. Observed molecular weight by Western-blot: 87-93 kDa

Preparation

This antibody was obtained by immunization of Gelsolin recombinant protein (Accession Number: NM_000177). Purification method: Antigen affinity purified.

Formulation

PBS only, pH 7.3.

Storage

Store at -20°C. DO NOT ALIQUOT

Clonality

Polyclonal

Ig Type

Rabbit IgG

Applications

ELISA, IHC, WB

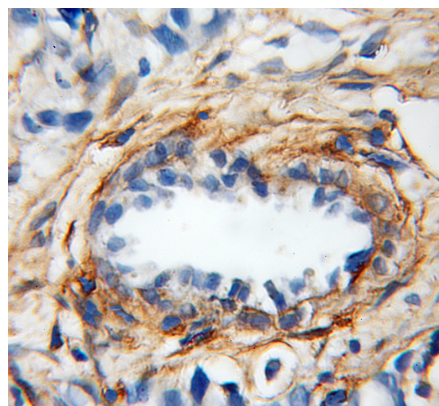
Dilutions

Recommended Dilution:

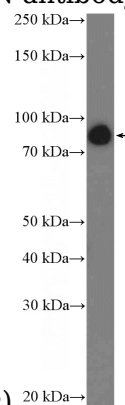
WB: 1:500-1:5000

IHC: 1:20-1:200

Validations



Immunohistochemical of paraffin-embedded human prostate cancer using Catalog No:110936(GSN antibody) at dilution of 1:50



(under 10x lens)

HeLa cells were subjected to SDS PAGE followed by western blot with Catalog No:110936(Gelsolin Antibody) at dilution of 1:1000