

BCR antibody

Catalog Number: 108436

Product name

BCR antibody

Specificity

Human, Monkey; other species not tested.

Antibody description

BCR Rabbit Polyclonal antibody. Positive IHC detected in human skin tissue. Positive IF detected in HepG2 cells. Positive FC detected in HepG2 cells. Positive IP detected in HEK-293 cells. Positive WB detected in Y79 cells, COS-7 cells, HEK-293 cells, HeLa cells, K-562 cells. Observed molecular weight by Western-blot: 150-160 kDa

Preparation

This antibody was obtained by immunization of BCR recombinant protein (Accession Number: BC066122). Purification method: Antigen Affinity purified.

Formulation

PBS with 0.02% sodium azide and 50% glycerol pH 7.3.

Storage

Store at -20°C. DO NOT ALIQUOT

Clonality

Polyclonal

Ig Type

Rabbit IgG

Applications

ELISA, WB, IF, IHC, FC, IP

Dilutions

Recommended Dilution:

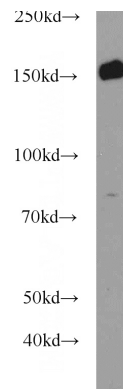
WB: 1:500-1:5000

IP: 1:500-1:5000

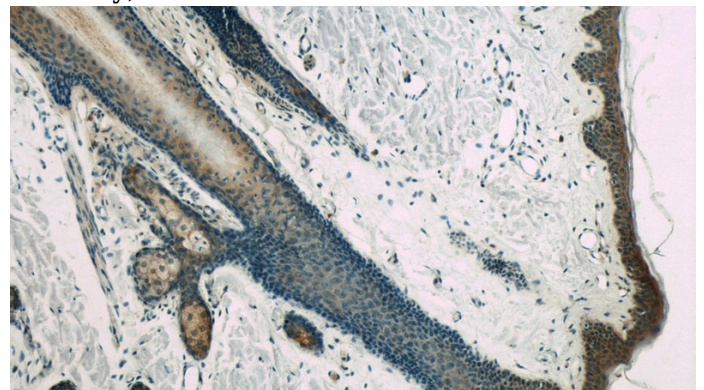
IHC: 1:20-1:200

IF: 1:20-1:200

Validations



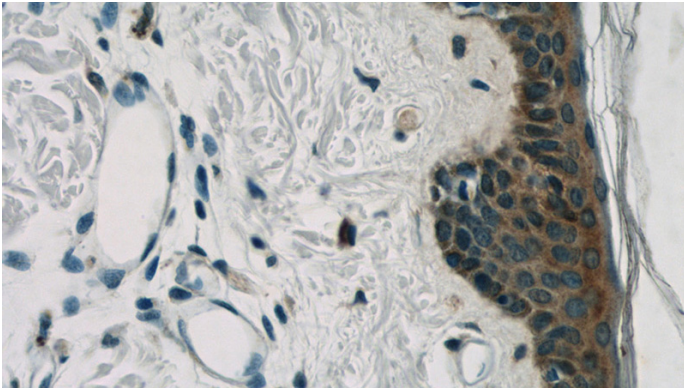
Y79 cells were subjected to SDS PAGE followed by western blot with Catalog No:117109(BCR antibody) at dilution of 1:1000



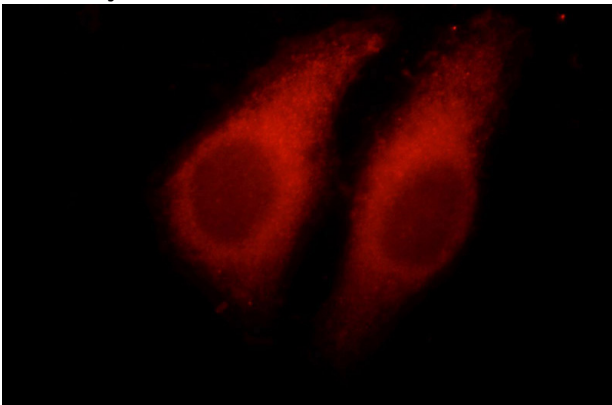
Immunohistochemistry of paraffin-embedded human skin slide using Catalog No:117109(BCR Antibody) at dilution of 1:50

BCR antibody

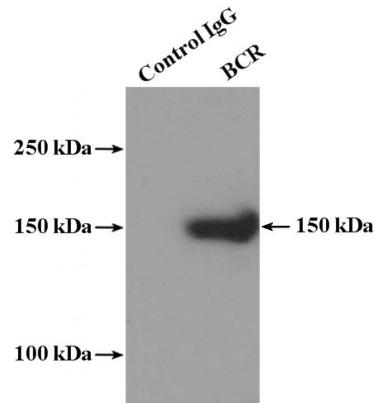
Catalog Number: 108436



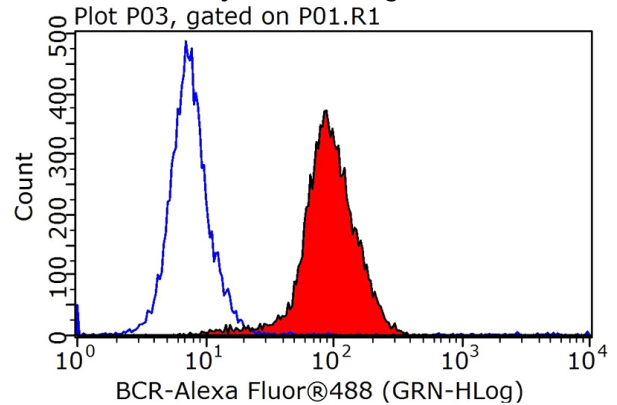
Immunohistochemistry of paraffin-embedded human skin slide using Catalog No:117109(BCR Antibody) at dilution of 1:50



Immunofluorescent analysis of HepG2 cells, using BCR antibody Catalog No:117109 at 1:50 dilution and Rhodamine-labeled goat anti-rabbit IgG (red).



IP Result of anti-BCR (IP:Catalog No:117109, 4ug; Detection:Catalog No:117109 1:1000) with HEK-293 cells lysate 3000ug.



1X10⁶ HepG2 cells were stained with .2ug BCR antibody (Catalog No:117109, red) and control antibody (blue). Fixed with 90% MeOH blocked with 3% BSA (30 min). Alexa Fluor 488-conjugated AffiniPure Goat Anti-Rabbit IgG(H+L) with dilution 1:1000.