

# Moesin antibody



Catalog Number: 112726

## Product name

Moesin antibody

## Specificity

Human, Mouse, Rat; other species not tested.

## Antibody description

Moesin Rabbit Polyclonal antibody. Positive FC detected in HepG2 cells. Positive IHC detected in human placenta tissue, human brain tissue, human heart tissue, human liver tissue, human lung tissue, human ovary tissue, human skin tissue, human testis tissue. Positive IF detected in HepG2 cells. Positive WB detected in SGC-7901 cells, BxPC-3 cells, HeLa cells, Jurkat cells, NIH/3T3 cells. Observed molecular weight by Western-blot: 68-70 kDa

## Preparation

This antibody was obtained by immunization of Moesin recombinant protein (Accession Number: NM\_002444). Purification method: Antigen affinity purified.

## Formulation

PBS with 0.02% sodium azide and 50% glycerol pH 7.3.

## Storage

Store at -20°C. DO NOT ALIQUOT

## Clonality

Polyclonal

## Ig Type

Rabbit IgG

## Applications

ELISA, IHC, IF, WB, FC

## Dilutions

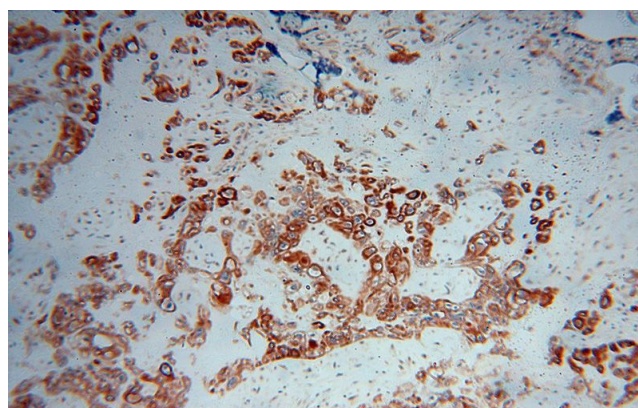
Recommended Dilution:

WB: 1:1000-1:10000

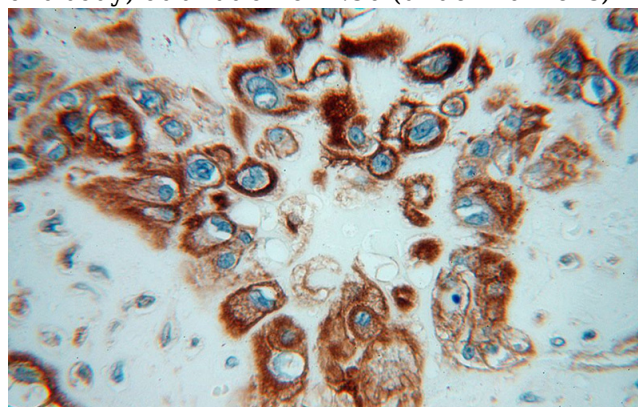
IHC: 1:20-1:200

IF: 1:10-1:100

## Validations



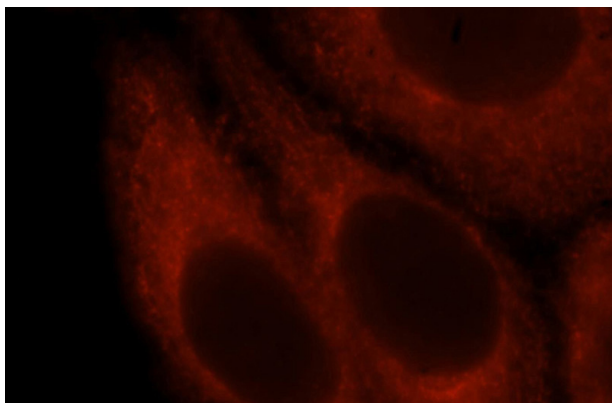
Immunohistochemical of paraffin-embedded human placenta using Catalog No:112726(MSN antibody) at dilution of 1:50 (under 10x lens)



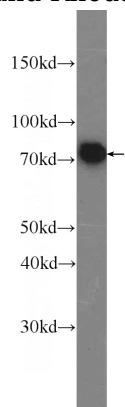
Immunohistochemical of paraffin-embedded human placenta using Catalog No:112726(MSN antibody) at dilution of 1:50 (under 40x lens)

# Moesin antibody

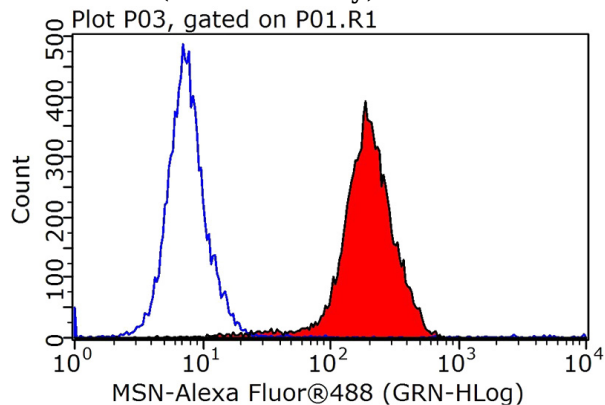
Catalog Number: 112726



Immunofluorescent analysis of HepG2 cells, using MSN antibody Catalog No:112726 at 1:25 dilution and Rhodamine-labeled goat anti-rabbit IgG (red).



SGC-7901 cells were subjected to SDS PAGE followed by western blot with Catalog No:112726(MSN Antibody) at dilution of 1:2000



1X10<sup>6</sup> HepG2 cells were stained with 0.2ug MSN antibody (Catalog No:112726, red) and control antibody (blue). Fixed with 90% MeOH blocked with 3% BSA (30 min). Alexa Fluor 488-conjugated AffiniPure Goat Anti-Rabbit IgG(H+L) with dilution 1:1000.