

# H6PD antibody



Catalog Number: 111326

## Product name

H6PD antibody

IP: 1:500-1:5000

IHC: 1:20-1:200

## Specificity

Human, Mouse, Rat; other species not tested.

## Antibody description

H6PD Rabbit Polyclonal antibody. Positive IP detected in HepG2 cells. Positive WB detected in HepG2 cells, HeLa cells, mouse liver tissue. Positive IHC detected in human hepatocirrhosis tissue, human liver cancer tissue. Observed molecular weight by Western-blot: 89-95 kDa

## Preparation

This antibody was obtained by immunization of H6PD recombinant protein (Accession Number: XM\_017002865). Purification method: Antigen affinity purified.

## Formulation

PBS with 0.02% sodium azide and 50% glycerol pH 7.3.

## Storage

Store at -20°C. DO NOT ALIQUOT

## Clonality

Polyclonal

## Ig Type

Rabbit IgG

## Applications

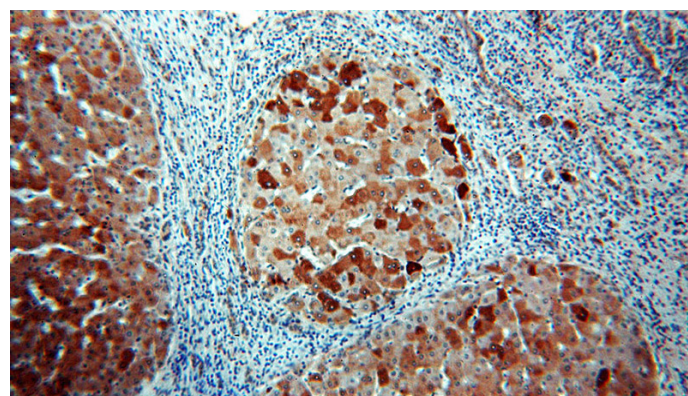
ELISA, IHC, WB, IP

## Dilutions

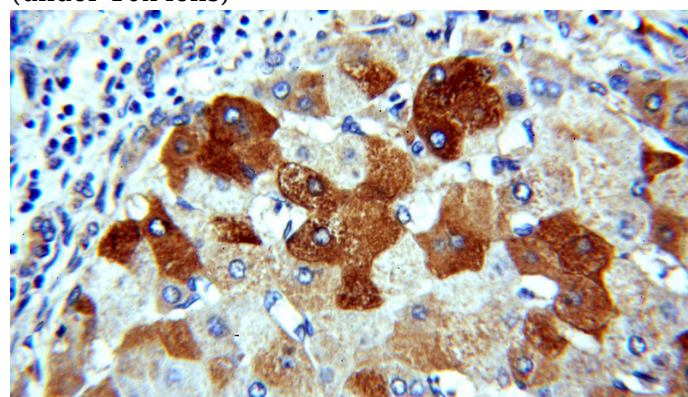
Recommended Dilution:

WB: 1:500-1:5000

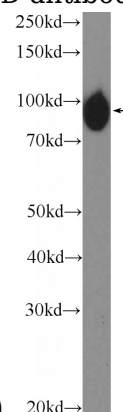
## Validations



Immunohistochemical of paraffin-embedded human hepatocirrhosis using Catalog No:111326(H6PD antibody) at dilution of 1:100 (under 10x lens)



Immunohistochemical of paraffin-embedded human hepatocirrhosis using Catalog No:111326(H6PD antibody) at dilution of 1:100



(under 40x lens)

HepG2 cells were subjected to SDS PAGE followed

# H6PD antibody

Catalog Number: 111326

---

by western blot with Catalog No:111326(H6PD Antibody) at dilution of 1:1000

IP Result of anti-H6PD (IP:Catalog No:111326, 4ug; Detection:Catalog No:111326 1:1000) with HepG2 cells lysate 1600ug.

