

FARSB antibody



Catalog Number: 110526

Product name

FARSB antibody

WB: 1:500-1:5000

IHC: 1:20-1:200

Specificity

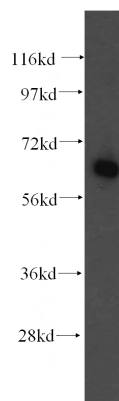
Human, Mouse, Rat; other species not tested.

IF: 1:20-1:200

Antibody description

FARSB Rabbit Polyclonal antibody. Positive WB detected in K-562 cells, HeLa cells, HepG2 cells, HL-60 cells, human liver tissue, mouse brain tissue. Positive IHC detected in human pancreas tissue. Positive IF detected in HepG2 cells. Observed molecular weight by Western-blot: 66 kDa

Validations



Preparation

This antibody was obtained by immunization of FARSB recombinant protein (Accession Number: NM_005687). Purification method: Antigen affinity purified.

K-562 cells were subjected to SDS PAGE followed by western blot with Catalog No:110526(FARSB antibody) at dilution of 1:500

Formulation

PBS with 0.02% sodium azide and 50% glycerol pH 7.3.

Storage

Store at -20°C. DO NOT ALIQUOT

Clonality

Polyclonal

Ig Type

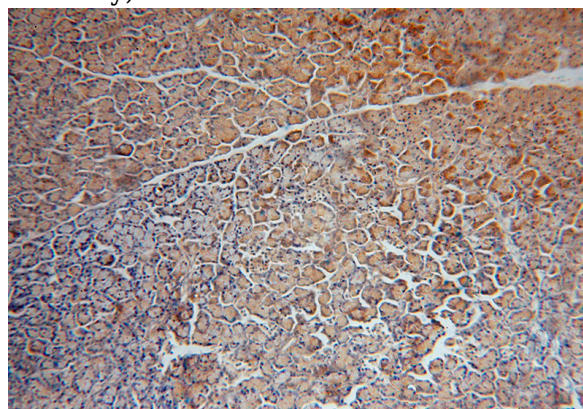
Rabbit IgG

Applications

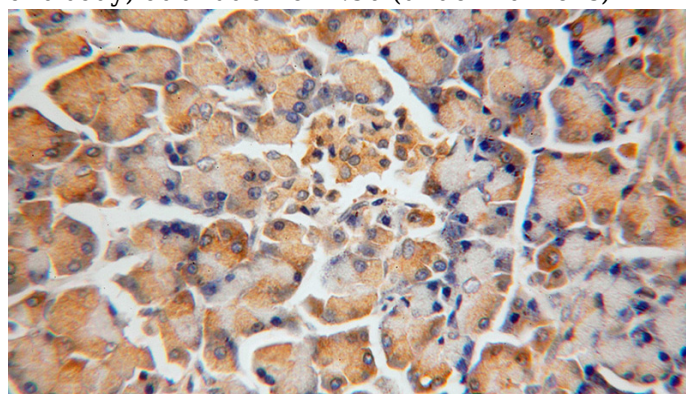
ELISA, WB, IHC, IF

Dilutions

Recommended Dilution:



Immunohistochemical of paraffin-embedded human pancreas using Catalog No:110526(FARSB antibody) at dilution of 1:50 (under 10x lens)

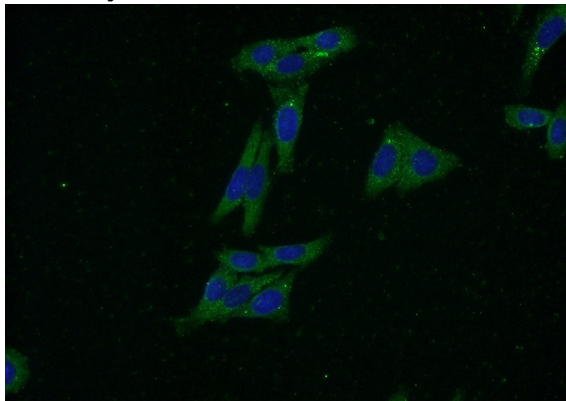


FARSB antibody



Catalog Number: 110526

Immunohistochemical of paraffin-embedded human pancreas using Catalog No:110526(FARSB antibody) at dilution of 1:50 (under 40x lens)



Immunofluorescent analysis of (-20oc Ethanol) fixed HepG2 cells using Catalog No:110526(FARSB Antibody) at dilution of 1:50 and Alexa Fluor 488-conjugated AffiniPure Goat Anti-Rabbit IgG(H+L)