

# RPS10 antibody



Catalog Number: 114826

## Product name

RPS10 antibody

Recommended Dilution:

WB: 1:200-1:2000

## Immunogen

IHC: 1:20-1:200

[Human RPS10 Recombinant protein \(GST tag & His tag\)](#)

## Specificity

human, mouse, rat; other species not tested.

## Antibody description

RPS10 Rabbit Polyclonal antibody. Positive WB detected in Raji cells. Positive IHC detected in human lymphoma. Observed molecular weight by Western-blot: 19kd

## Preparation

This antibody was obtained by immunization of RPS10 recombinant protein (Accession Number: NM\_001203245). Purification method: Antigen affinity purified.

## Formulation

PBS with 0.02% sodium azide and 50% glycerol pH 7.3.

## Storage

Store at -20°C. DO NOT ALIQUOT

## Clonality

Polyclonal

## Ig Type

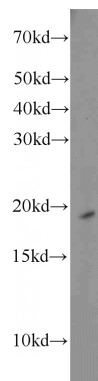
Rabbit IgG

## Applications

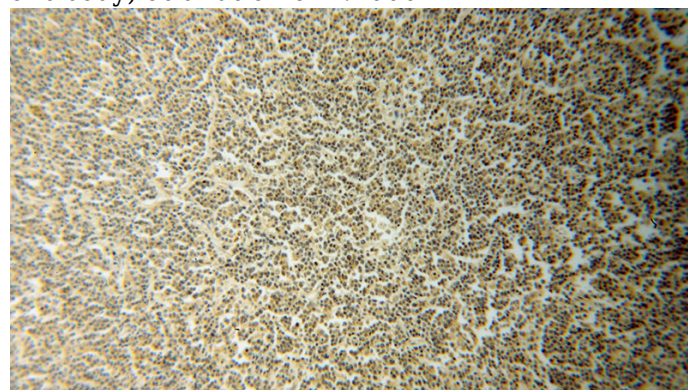
ELISA, WB, IHC

## Dilutions

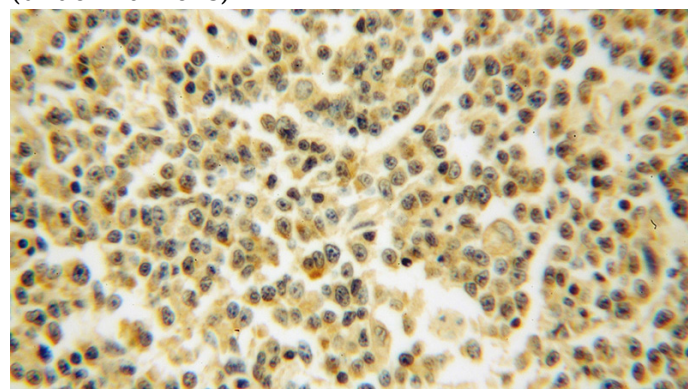
## Validations



Raji cells were subjected to SDS PAGE followed by western blot with Catalog No:114826(RPS10 antibody) at dilution of 1:1000



Immunohistochemical of paraffin-embedded human lymphoma using Catalog No:114826(RPS10 antibody) at dilution of 1:100 (under 10x lens)



# RPS10 antibody



Catalog Number: 114826

---

Immunohistochemical of paraffin-embedded  
human lymphoma using Catalog

No:114826(RPS10 antibody) at dilution of 1:100  
(under 40x lens)