

# GAGE7 antibody



Catalog Number: 110826

## Product name

GAGE7 antibody

Recommended Dilution:

WB: 1:200-1:2000

## Immunogen

IHC: 1:20-1:200

[Human GAGE7 Recombinant protein \(GST tag & His tag\)](#)

## Validations

## Specificity

Human; other species not tested.

## Antibody description

GAGE7 Rabbit Polyclonal antibody. Positive IHC detected in human prostate cancer tissue, human gliomas tissue. Positive WB detected in Transfected HEK-293 cells.

## Preparation

This antibody was obtained by immunization of GAGE7 recombinant protein (Accession Number: NM\_001477). Purification method: Antigen affinity purified.

## Formulation

PBS with 0.1% sodium azide and 50% glycerol pH 7.3.

## Storage

Store at -20°C. DO NOT ALIQUOT

## Clonality

Polyclonal

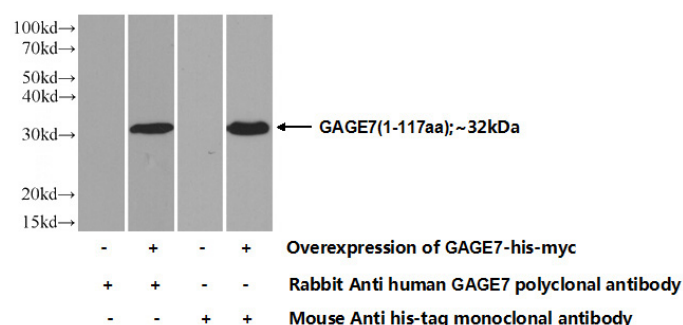
## Ig Type

Rabbit IgG

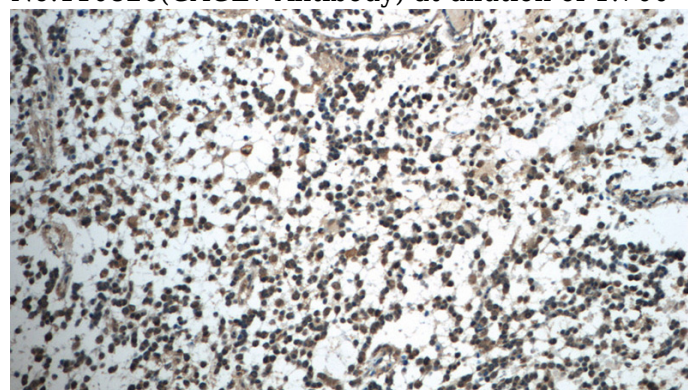
## Applications

ELISA, IHC, WB

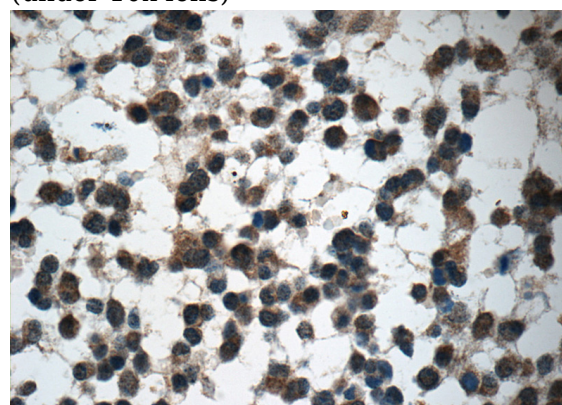
## Dilutions



Transfected HEK-293 cells were subjected to SDS PAGE followed by western blot with Catalog No:110826(GAGE7 Antibody) at dilution of 1:700



Immunohistochemistry of paraffin-embedded human gliomas tissue slide using Catalog No:110826(GAGE7 Antibody) at dilution of 1:50 (under 10x lens)



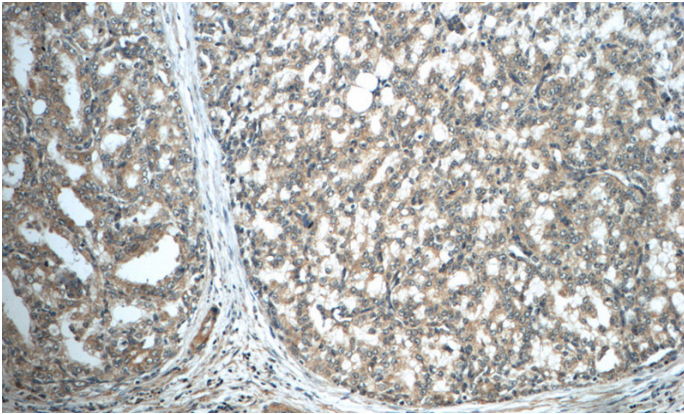
Immunohistochemistry of paraffin-embedded

# GAGE7 antibody

Catalog Number: 110826

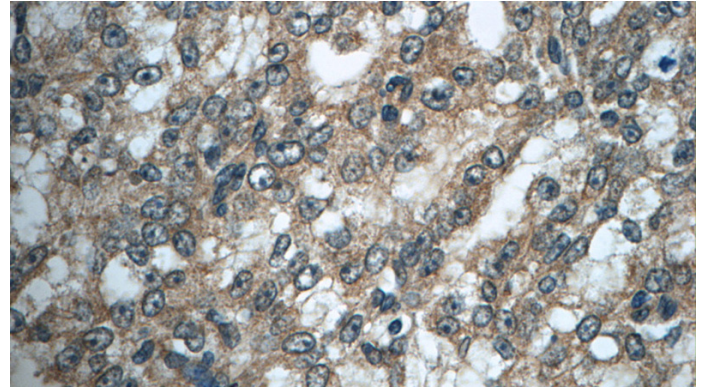
---

human gliomas tissue slide using Catalog  
No:110826(GAGE7 Antibody) at dilution of 1:50  
(under 40x lens)



Immunohistochemistry of paraffin-embedded  
human prostate cancer tissue slide using Catalog

No:110826(GAGE7 Antibody) at dilution of 1:50  
(under 10x lens)



Immunohistochemistry of paraffin-embedded  
human prostate cancer tissue slide using Catalog  
No:110826(GAGE7 Antibody) at dilution of 1:50  
(under 40x lens)