

Mouse AIMP1/EMAP II recombinant protein



Catalog Number: 502716

General Information

Gene Name Synonym

Cytotoxic T-lymphocyte-associated antigen 8

Protein Construction

A DNA sequence encoding the mouse SCYE1 (Q62386) (Ser145-Lys310) was expressed and purified.

Organism

Mouse

Expression Host

E. coli

QC Testing

Purity

> 95 % as determined by SDS-PAGE

Endotoxin

Please contact us for more information.

Stability

Samples are stable for up to twelve months from date of receipt at -70°C

Predicted N terminal

Met

Molecular Mass

The recombinant mouse SCYE1 consists of 166

amino acids and predicts a molecular mass of 18 KDa. It migrates as an approximately 19 KDa band in SDS-PAGE under reducing conditions.

Formulation

Lyophilized from sterile PBS

1. 5 % trehalose and mannitol are added as protectants before lyophilization.

2. Please contact us for any concerns or special requirements.

Usage Guide

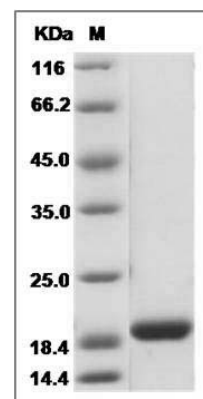
Storage

Store it under sterile conditions at -20°C to -80°C. It is recommended that the protein be aliquoted for optimal storage. Avoid repeated freeze-thaw cycles.

Reconstitution

Adding sterile water, prepare a stock solution of 0.25 mg/ml. Concentration is measured by UV-Vis.

SDS-PAGE



Mouse AIMP1 / EMAP2 / SCYE1 Protein SDS-PAGE