

# G-CSF antibody



Catalog Number: 110916

## Product name

G-CSF antibody

## Specificity

Human; other species not tested.

## Antibody description

G-CSF Rabbit Polyclonal antibody. Positive IF detected in HeLa cells. Positive IHC detected in human pancreas tissue. Positive WB detected in Transfected HEK-293 cells.

## Preparation

This antibody was obtained by immunization of G-CSF recombinant protein (Accession Number: BC033245). Purification method: Antigen affinity purified.

## Formulation

PBS with 0.1% sodium azide and 50% glycerol pH 7.3.

## Storage

Store at -20°C. DO NOT ALIQUOT

## Clonality

Polyclonal

## Ig Type

Rabbit IgG

## Applications

ELISA, IF, IHC, WB

## Dilutions

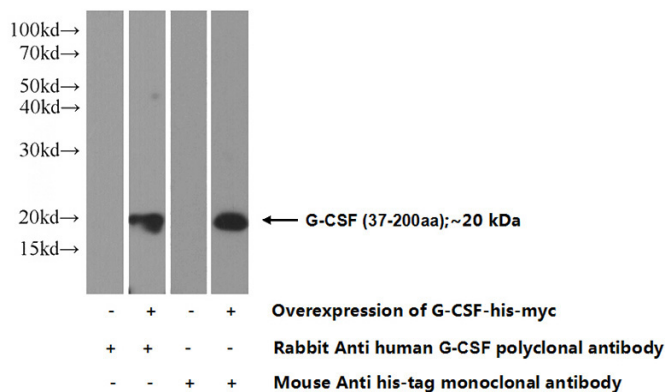
Recommended Dilution:

WB: 1:500-1:5000

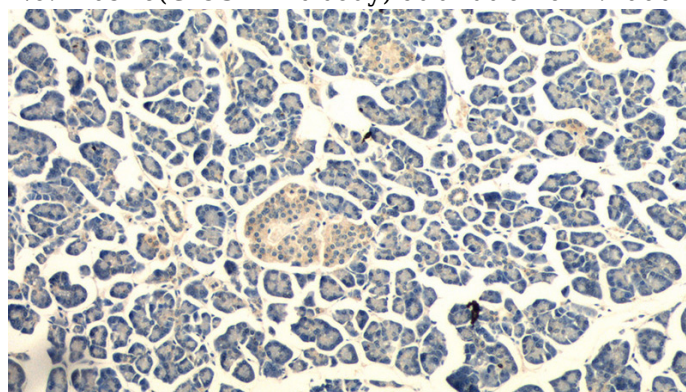
IHC: 1:20-1:200

IF: 1:10-1:100

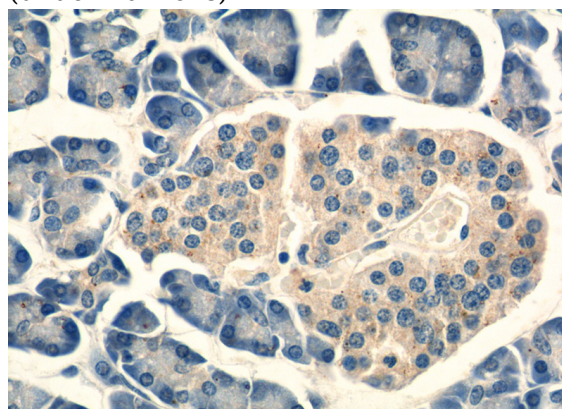
## Validations



Transfected HEK-293 cells were subjected to SDS PAGE followed by western blot with Catalog No:110916(G-CSF Antibody) at dilution of 1:1000



Immunohistochemistry of paraffin-embedded human pancreas tissue slide using Catalog No:110916(G-CSF Antibody) at dilution of 1:50 (under 10x lens)



Immunohistochemistry of paraffin-embedded human pancreas tissue slide using Catalog No:110916(G-CSF Antibody) at dilution of 1:50

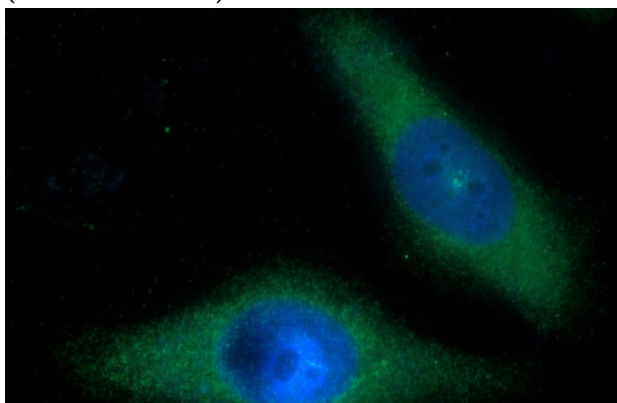
# G-CSF antibody



Catalog Number: 110916

---

(under 40x lens)



Immunofluorescent analysis of HeLa cells using Catalog No:110916(G-CSF Antibody) at dilution of 1:25 and Alexa Fluor 488-conjugated AffiniPure Goat Anti-Rabbit IgG(H+L)