

OTUD6A antibody



Catalog Number: 113516

Product name

OTUD6A antibody

Immunogen

[Human OTUD6A Recombinant protein \(GST tag & His tag\)](#)

Specificity

Human; other species not tested.

Antibody description

OTUD6A Rabbit Polyclonal antibody. Positive WB detected in MCF-7 cells. Positive IF detected in MCF-7 cells. Observed molecular weight by Western-blot: 33 kDa

Preparation

This antibody was obtained by immunization of OTUD6A recombinant protein (Accession Number: NM_207320). Purification method: Antigen affinity purified.

Formulation

PBS with 0.1% sodium azide and 50% glycerol pH 7.3.

Storage

Store at -20°C. DO NOT ALIQUOT

Clonality

Polyclonal

Ig Type

Rabbit IgG

Applications

ELISA, WB, IF

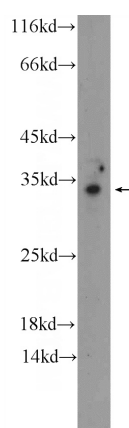
Dilutions

Recommended Dilution:

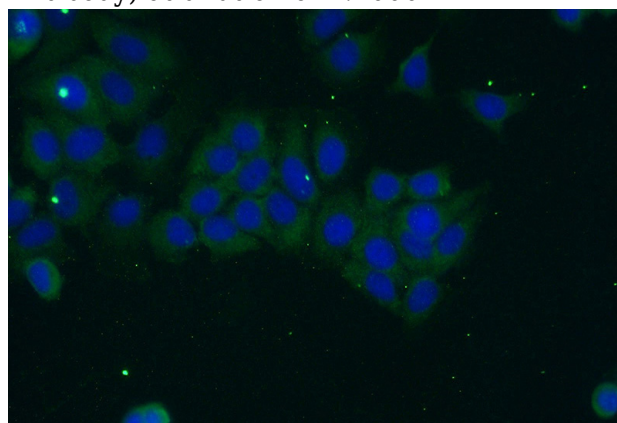
WB: 1:500-1:5000

IF: 1:20-1:200

Validations



MCF-7 cells were subjected to SDS PAGE followed by western blot with Catalog No:113516(OTUD6A Antibody) at dilution of 1:1000



Immunofluorescent analysis of (-20oc Ethanol) fixed MCF-7 cells using Catalog No:113516(OTUD6A Antibody) at dilution of 1:50 and Alexa Fluor 488-conjugated AffiniPure Goat Anti-Rabbit IgG(H+L)