

RPL15 antibody



Catalog Number: 114816

Product name

RPL15 antibody

Immunogen

[Human RPL15 Recombinant protein \(His tag\)](#)

Specificity

Human, Mouse, Rat; other species not tested.

Antibody description

RPL15 Rabbit Polyclonal antibody. Positive WB detected in COLO 320 cells, HeLa cells, K-562 cells, mouse brain tissue, SGC-7901 cells. Observed molecular weight by Western-blot: 27 kDa

Preparation

This antibody was obtained by immunization of RPL15 recombinant protein (Accession Number: NM_001253380). Purification method: Antigen affinity purified.

Formulation

PBS with 0.02% sodium azide and 50% glycerol pH 7.3.

Storage

Store at -20°C. DO NOT ALIQUOT

Clonality

Polyclonal

Ig Type

Rabbit IgG

Applications

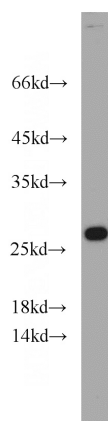
ELISA, WB

Dilutions

Recommended Dilution:

WB: 1:200-1:1000

Validations



COLO 320 cells were subjected to SDS PAGE followed by western blot with Catalog No:114816(RPL15 antibody) at dilution of 1:300