

# TRIM24 antibody



Catalog Number: 116306

## Product name

TRIM24 antibody

## Immunogen

[Human TRIM24 Recombinant protein \(His tag\)](#)

## Specificity

Human, Mouse, Rat; other species not tested.

## Antibody description

TRIM24 Rabbit Polyclonal antibody. Positive IP detected in MCF-7 cells. Positive WB detected in HeLa cells, BGC-823 cells, human heart tissue, L02 cells, MCF7 cells, mouse skeletal muscle tissue. Positive IF detected in HeLa cells. Positive IHC detected in human prostate cancer tissue. Observed molecular weight by Western-blot: 116 kDa

## Preparation

This antibody was obtained by immunization of TRIM24 recombinant protein (Accession Number: NM\_015905). Purification method: Antigen affinity purified.

## Formulation

PBS with 0.02% sodium azide and 50% glycerol pH 7.3.

## Storage

Store at -20°C. DO NOT ALIQUOT

## Clonality

Polyclonal

## Ig Type

Rabbit IgG

## Applications

ELISA, WB, IHC, IP, IF

## Dilutions

Recommended Dilution:

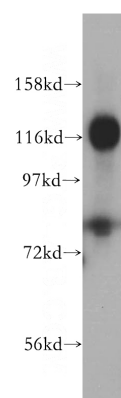
WB: 1:500-1:5000

IP: 1:200-1:2000

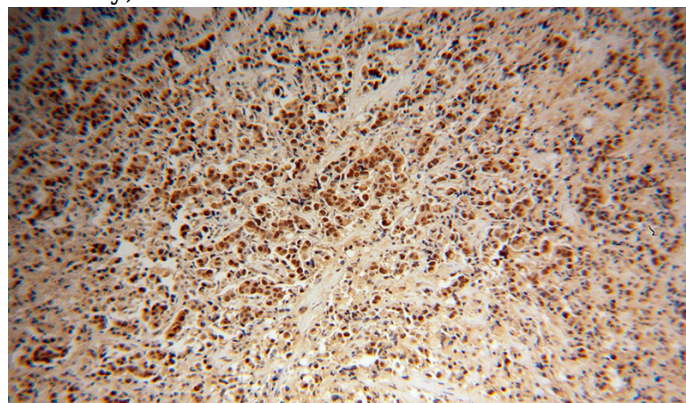
IHC: 1:20-1:200

IF: 1:50-1:500

## Validations



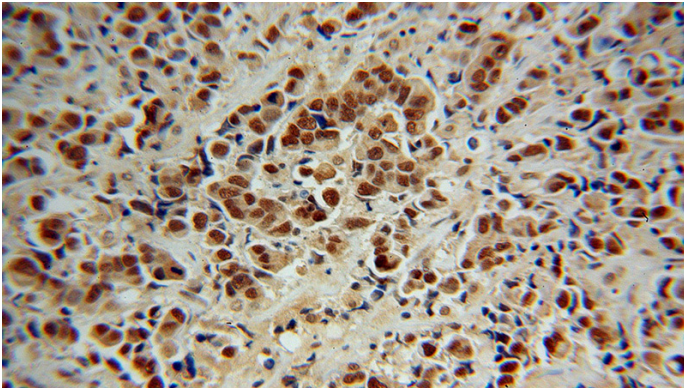
HeLa cells were subjected to SDS PAGE followed by western blot with Catalog No:116306 (TRIM24 antibody) at dilution of 1:500



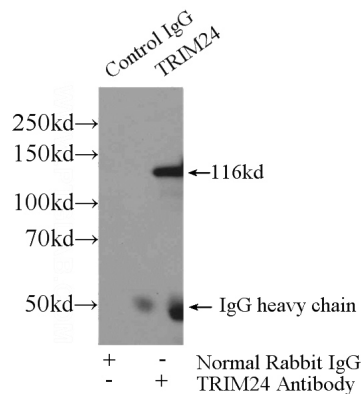
Immunohistochemical of paraffin-embedded human prostate cancer using Catalog No:116306 (TRIM24 antibody) at dilution of 1:100 (under 10x lens)

# TRIM24 antibody

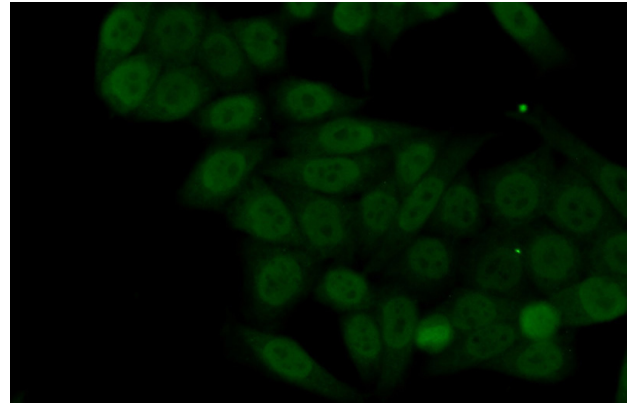
Catalog Number: 116306



Immunohistochemical of paraffin-embedded human prostate cancer using Catalog No:116306(TRIM24 antibody) at dilution of 1:100 (under 40x lens)



IP Result of anti-TRIM24 (IP:Catalog No:116306, 4ug; Detection:Catalog No:116306 1:800) with MCF-7 cells lysate 4000ug.



Immunofluorescent analysis of (10% Formaldehyde) fixed HeLa cells using Catalog No:116306(TRIM24 Antibody) at dilution of 1:50 and Alexa Fluor 488-conjugated AffiniPure Goat Anti-Rabbit IgG(H+L)