

Anti-Folate Binding Protein Rabbit antibody



Catalog Number: 168606

Product name

Anti-Folate Binding Protein Rabbit antibody

Specificity

Human, Mouse, Rat

Antibody description

Folate Binding Protein Rabbit monoclonal antibody

Preparation

Antigen: A synthetic peptide of human Folate Binding Protein

Formulation

50nM Tris-Glycine(pH 7.4), 0.15M NaCl, 40%Glycerol, 0.01% sodium azide and 0.05% BSA.

Storage

Store at 4°C short term. Store at -20°C long term. Avoid freeze / thaw cycle.

Clonality

Monoclonal

Ig Type

Rabbit IgG

Applications

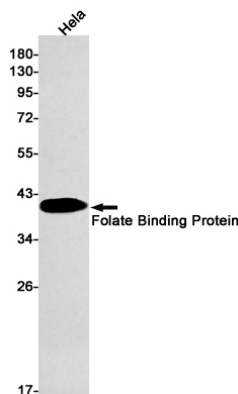
WB, IHC-P

Dilutions

WB: 1/1000-1/2000

IHC: 1/200

Validations



Western blot detection of Folate Binding Protein in HeLa cell lysates using Folate Binding Protein Rabbit mAb(1:1000 diluted).Predicted band size:30kDa.Observed band size:40kDa.