

CLTB antibody



Catalog Number: 109406

Product name

CLTB antibody

Immunogen

[Human CLTB Recombinant protein \(GST tag & His tag\)](#)

Specificity

Human, Mouse, Rat; other species not tested.

Antibody description

CLTB Rabbit Polyclonal antibody. Positive WB detected in mouse thymus tissue, human brain tissue, mouse brain tissue, PC-3 cells. Positive IP detected in mouse brain tissue. Positive IF detected in HeLa cells, HEK-293 cells. Observed molecular weight by Western-blot: 32-38 kDa

Preparation

This antibody was obtained by immunization of CLTB recombinant protein (Accession Number: NM_001834). Purification method: Antigen affinity purified.

Formulation

PBS with 0.1% sodium azide and 50% glycerol pH 7.3.

Storage

Store at -20°C. DO NOT ALIQUOT

Clonality

Polyclonal

Ig Type

Rabbit IgG

Applications

ELISA, WB, IP, IF

Dilutions

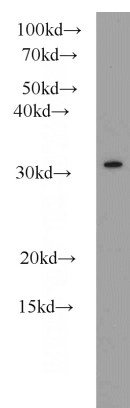
Recommended Dilution:

WB: 1:500-1:5000

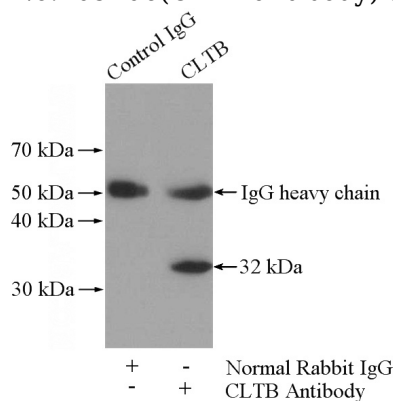
IP: 1:200-1:2000

IF: 1:50-1:500

Validations



mouse thymus tissue were subjected to SDS PAGE followed by western blot with Catalog No:109406 (CLTB antibody) at dilution of 1:1000

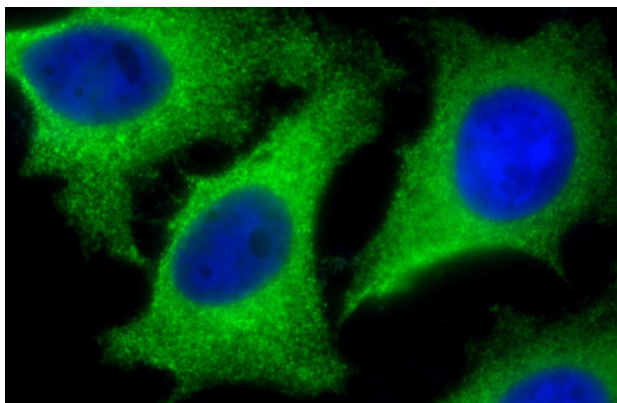


IP Result of anti-CLTB (IP: Catalog No:109406, 4ug; Detection: Catalog No:109406 1:500) with mouse brain tissue lysate 4000ug.

CLTB antibody



Catalog Number: 109406



Immunofluorescent analysis of (10% Formaldehyde) fixed HeLa cells using Catalog No:109406(CLTB Antibody) at dilution of 1:100 and Alexa Fluor 488-conjugated AffiniPure Goat Anti-Rabbit IgG(H+L)