

Anti-p21 Rabbit antibody



Catalog Number: 167406

Product name

Anti-p21 Rabbit antibody

Specificity

Human

Antibody description

p21 Rabbit polyclonal antibody

Preparation

Antigen: A synthetic peptide of human p21

Formulation

Supplied in 50nM Tris-Glycine(pH 7.4), 0.15M NaCl, 40%Glycerol, 0.01% sodium azide and 0.05% BSA.

Storage

Store at -20°C. Stable for 12 months from date of receipt.

Clonality

Polyclonal

Ig Type

Rabbit IgG

Applications

WB, IHC-P, ICC/IF, FC, IP

Dilutions

WB: 1/1000

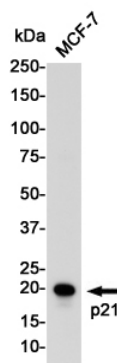
IHC: 1/50

ICC/IF: 1/100

FC: 1/50

IP: 1/10

Validations



Western blot detection of p21 Waf1/Cip1 in MCF-7 cell lysates using p21 Waf1/Cip1 Rabbit pAb(1:1000 diluted). Predicted band size:18KDa.Observed band size:21KDa.