

AMPK alpha 1 antibody



Catalog Number: 108006

Product name

AMPK alpha 1 antibody

IHC: 1:20-1:200

IF: 1:10-1:100

Specificity

Human, Mouse, Rat; other species not tested.

Antibody description

AMPK alpha 1 Rabbit Polyclonal antibody. Positive IF detected in HepG2 cells. Positive IHC detected in human prostate cancer tissue. Positive WB detected in HeLa cells, rat heart tissue. Observed molecular weight by Western-blot: 63 kDa

Preparation

This antibody was obtained by immunization of AMPK alpha 1 recombinant protein (Accession Number: BC012622). Purification method: Antigen affinity purified.

Formulation

PBS with 0.1% sodium azide and 50% glycerol pH 7.3.

Storage

Store at -20°C. DO NOT ALIQUOT

Clonality

Polyclonal

Ig Type

Rabbit IgG

Applications

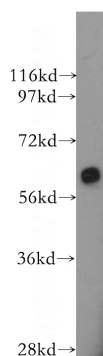
ELISA, WB, IHC, IF

Dilutions

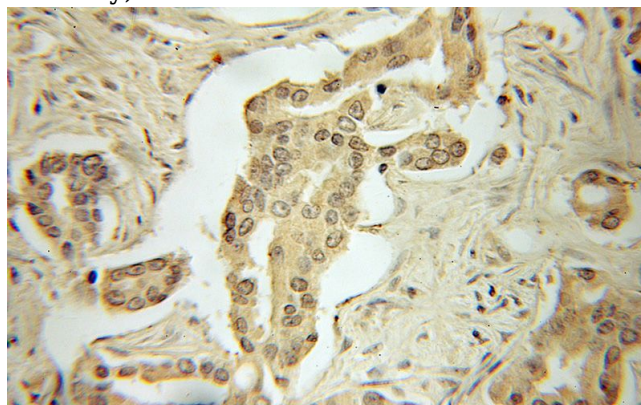
Recommended Dilution:

WB: 1:200-1:1000

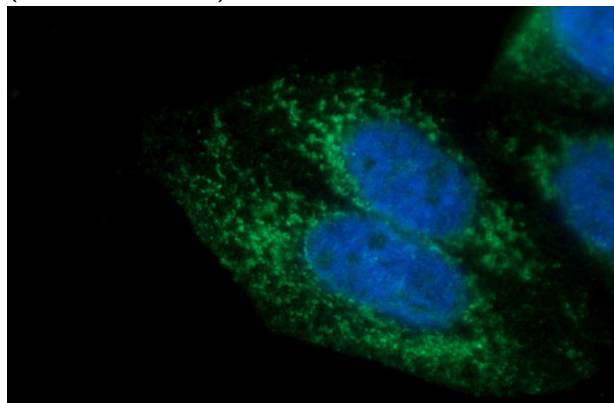
Validations



HeLa cells were subjected to SDS PAGE followed by western blot with Catalog No:108006(PRKAA1 antibody) at dilution of 1:300



Immunohistochemical of paraffin-embedded human prostate cancer using Catalog No:108006(PRKAA1 antibody) at dilution of 1:100 (under 10x lens)



Immunofluorescent analysis of HepG2 cells using

AMPK alpha 1 antibody



Catalog Number: 108006

Catalog No:108006(AMPK alpha Antibody) at

dilution of 1:25 and Alexa Fluor 488-conjugated
AffiniPure Goat Anti-Rabbit IgG(H+L)