

PLOD3 antibody



Catalog Number: 114006

Product name

PLOD3 antibody

Recommended Dilution:

WB: 1:200-1:2000

Specificity

Human, Mouse, Rat; other species not tested.

IP: 1:200-1:2000

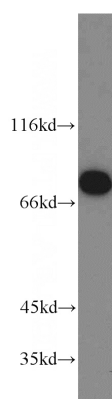
IHC: 1:20-1:200

Antibody description

PLOD3 Rabbit Polyclonal antibody. Positive IF detected in HepG2 cells. Positive IHC detected in human pancreas cancer tissue, human kidney tissue, human pancreas tissue. Positive IP detected in HepG2 cells. Positive WB detected in HepG2 cells, A549 cells, HeLa cells, human placenta tissue, mouse placenta tissue, PC-3 cells. Observed molecular weight by Western-blot: 80-85 kDa

IF: 1:10-1:100

Validations



Preparation

This antibody was obtained by immunization of PLOD3 recombinant protein (Accession Number: NM_001084). Purification method: Antigen affinity purified.

HepG2 cells were subjected to SDS PAGE followed by western blot with Catalog No:114006(PLOD3 antibody) at dilution of 1:800

Formulation

PBS with 0.1% sodium azide and 50% glycerol pH 7.3.

Storage

Store at -20°C. DO NOT ALIQUOT

Clonality

Polyclonal

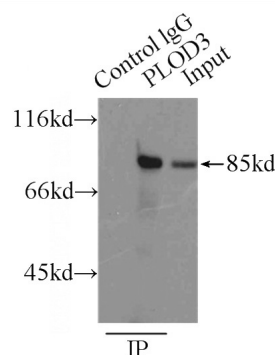
Ig Type

Rabbit IgG

Applications

ELISA, WB, IHC, IP, IF

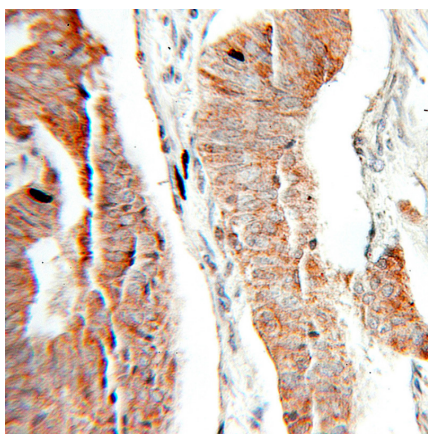
Dilutions



IP Result of anti-PLOD3 (IP:Catalog No:114006, 3ug; Detection:Catalog No:114006 1:500) with HepG2 cells lysate 6000ug.

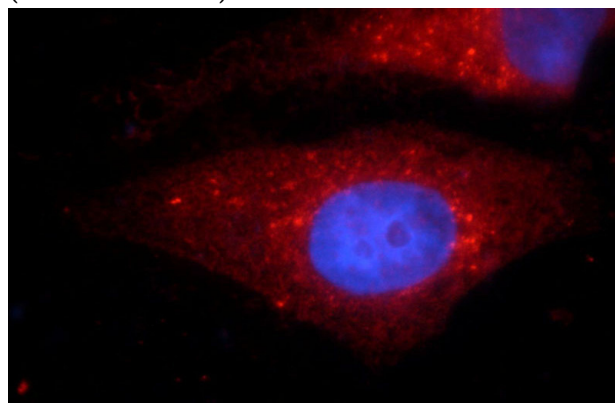
PLOD3 antibody

Catalog Number: 114006



Immunohistochemical of paraffin-embedded human pancreas cancer using Catalog No:114006(PLOD3 antibody) at dilution of 1:50

(under 10x lens)



Immunofluorescent analysis of HepG2 cells using Catalog No:114006(PLOD3 Antibody) at dilution of 1:25 and Rhodamine-Goat anti-Rabbit IgG