

# SLAMF6 antibody



Catalog Number: 115295

## Product name

SLAMF6 antibody

## Specificity

Human; other species not tested.

## Antibody description

SLAMF6 Rabbit Polyclonal antibody. Positive WB detected in Daudi cells. Positive IHC detected in human tonsillitis tissue. Observed molecular weight by Western-blot: 60 kDa

## Preparation

This antibody was obtained by immunization of SLAMF6 recombinant protein (Accession Number: NM\_001184714). Purification method: Antigen affinity purified.

## Formulation

PBS with 0.02% sodium azide and 50% glycerol pH 7.3.

## Storage

Store at -20°C. DO NOT ALIQUOT

## Clonality

Polyclonal

## Ig Type

Rabbit IgG

## Applications

ELISA, IHC, WB

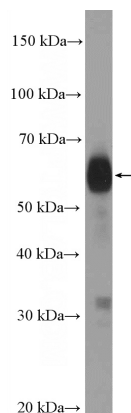
## Dilutions

Recommended Dilution:

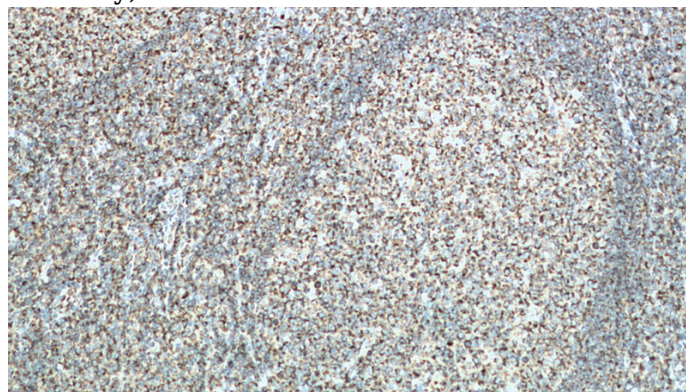
WB: 1:200-1:2000

IHC: 1:50-1:500

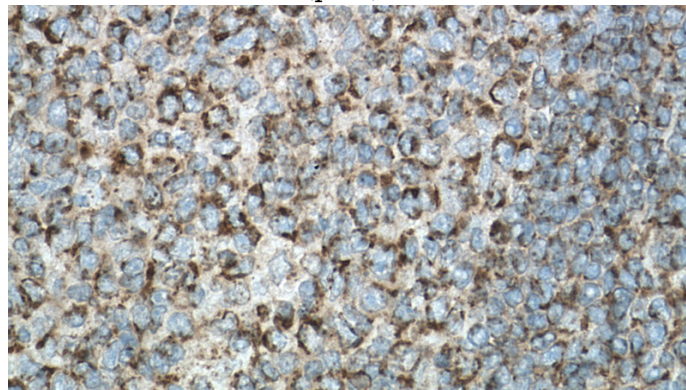
## Validations



Daudi cells were subjected to SDS PAGE followed by western blot with Catalog No:115295(SLAMF6 Antibody) at dilution of 1:600



Immunohistochemistry of paraffin-embedded human tonsillitis tissue slide using Catalog No:115295(SLAMF6 Antibody) at dilution of 1:200 (under 10x lens). heat mediated antigen retrieved with Tris-EDTA buffer(pH9).



Immunohistochemistry of paraffin-embedded human tonsillitis tissue slide using Catalog No:115295(SLAMF6 Antibody) at dilution of 1:200 (under 40x lens). heat mediated antigen retrieved

# SLAMF6 antibody



Catalog Number: 115295

---

with Tris-EDTA buffer(pH9).