

Myosin Light Chain 2 antibody



Catalog Number: 112995

Product name

Myosin Light Chain 2 antibody

Immunogen

[Human MYL2 Recombinant protein \(GST tag & His tag\)](#)

Specificity

Human, Mouse, Rat, Zebrafish; other species not tested.

Antibody description

Myosin Light Chain 2 Rabbit Polyclonal antibody. Positive IP detected in mouse heart tissue. Positive WB detected in mouse heart tissue, rat heart tissue. Positive IHC detected in human heart tissue. Observed molecular weight by Western-blot: 19 kDa

Preparation

This antibody was obtained by immunization of Myosin Light Chain 2 recombinant protein (Accession Number: NM_000432). Purification method: Antigen affinity purified.

Formulation

PBS with 0.1% sodium azide and 50% glycerol pH 7.3.

Storage

Store at -20°C. DO NOT ALIQUOT

Clonality

Polyclonal

Ig Type

Rabbit IgG

Applications

ELISA, WB, IP, IHC

Dilutions

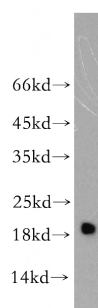
Recommended Dilution:

WB: 1:500-1:5000

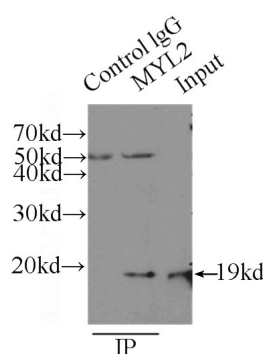
IP: 1:200-1:2000

IHC: 1:50-1:500

Validations



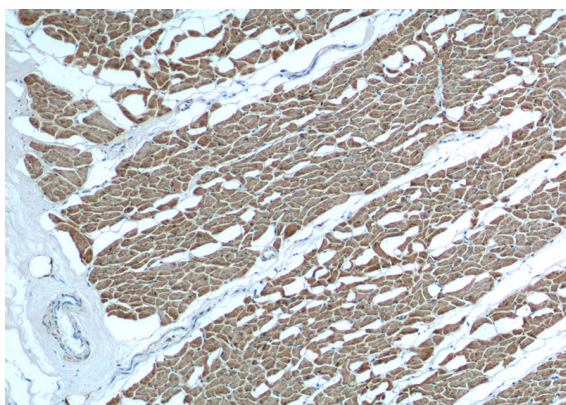
mouse heart tissue were subjected to SDS PAGE followed by western blot with Catalog No:112995(MYL2 antibody) at dilution of 1:1000



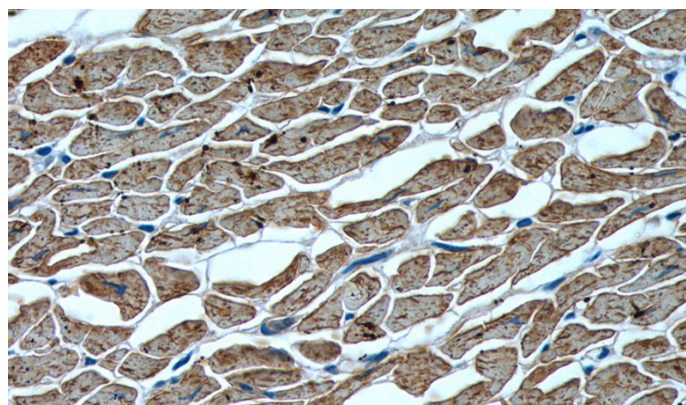
IP Result of anti-MYL2 (IP:Catalog No:112995, 3ug; Detection:Catalog No:112995 1:500) with mouse heart tissue lysate 6000ug.

Myosin Light Chain 2 antibody

Catalog Number: 112995



Immunohistochemistry of paraffin-embedded human heart tissue slide using Catalog No:112995(MYL2 Antibody) at dilution of 1:200 (under 10x lens)



Immunohistochemistry of paraffin-embedded human heart tissue slide using Catalog No:112995(MYL2 Antibody) at dilution of 1:200 (under 40x lens)