

Human EGFR/HER1/ErbB1 (His Tag) recombinant protein



Catalog Number: 500195

General Information

Gene Name Synonym

Proto-oncogene c-ErbB-1; Receptor tyrosine-protein kinase erbB-1

Protein Construction

A DNA sequence encoding the extracellular domain (Met 1-Lys 642) of human EGFR (NP_005219) was expressed with a C-terminal polyhistidine tag.

Organism

Human

Expression Host

Baculovirus-Insect Cells

QC Testing

Activity

Measured by its binding ability in a functional ELISA.
Immobilized human EGF at 10 µg/ml can bind human EGFR with a linear range of 3.2-400 ng/ml.

Purity

> 95 % as determined by SDS-PAGE

Endotoxin

< 1.0 EU per µg of the protein as determined by the LAL method

Stability

Samples are stable for up to twelve months from date of receipt at -70°C

Predicted N terminal

Leu 25

Molecular Mass

The recombinant human EGFR consists of 626 amino acids and has a calculated molecular mass of 69.2 kDa. The recombinant protein migrates as an approximately 75 kDa protein in SDS-PAGE under reducing conditions.

Formulation

Lyophilized from sterile 20mM Tris, 50mM NaCl, 3mM DTT, 0.5mM TCEP, pH 7.4
1. 5 % trehalose and mannitol are added as protectants before lyophilization.
2. Please contact us for any concerns or special requirements.

Usage Guide

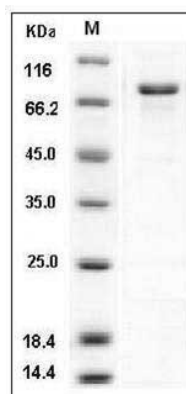
Storage

Store it under sterile conditions at -20°C to -80°C. It is recommended that the protein be aliquoted for optimal storage. Avoid repeated freeze-thaw cycles.

Reconstitution

Adding sterile water, prepare a stock solution of 0.25 mg/ml. Concentration is measured by UV-Vis.

SDS-PAGE



Human EGFR / HER1 / ErbB1 Protein (His Tag)
SDS-PAGE