

# Human HER2/ErbB2 (His Tag) recombinant protein



Catalog Number: 503895

## General Information

### Gene Name Synonym

Metastatic lymph node gene 19 protein; Proto-oncogene Neu; Proto-oncogene c-ErbB-2; Tyrosine kinase-type cell surface receptor HER2; p185erbB2

### Protein Construction

A DNA sequence encoding the human ERBB2 (AAA75493.1) (Pro489-Cys630) was expressed with a polyhistidine tag at the C-terminus.

### Organism

Human

### Expression Host

Human Cells

## QC Testing

### Purity

> (48.9+40.2) % as determined by SDS-PAGE.

### Endotoxin

<1.0 EU per  $\mu\text{g}$  protein as determined by the LAL method.

### Stability

Samples are stable for up to twelve months from date of receipt at  $-70^{\circ}\text{C}$

### Predicted N terminal

Pro 489

## Molecular Mass

The recombinant human ERBB2 consists of 153 amino acids and predicts a molecular mass of 17.1 kDa.

### Formulation

Lyophilized from sterile PBS, pH 7.4.

1. 5 % trehalose and mannitol are added as protectants before lyophilization.

2. Please contact us for any concerns or special requirements.

## Usage Guide

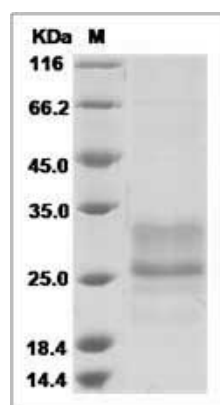
### Storage

Store it under sterile conditions at  $-20^{\circ}\text{C}$  to  $-80^{\circ}\text{C}$ . It is recommended that the protein be aliquoted for optimal storage. Avoid repeated freeze-thaw cycles.

### Reconstitution

Adding sterile water, prepare a stock solution of 0.25 mg/ml. Concentration is measured by UV-Vis.

### SDS-PAGE



Human HER2 / ErbB2 Protein (domain IV) (His Tag)