

# Cytochrome c antibody



Catalog Number: 109785

## Product name

Cytochrome c antibody

WB: 1:200-1:2000

IHC: 1:20-1:400

## Specificity

Human, Mouse, Rat; other species not tested.

## Antibody description

Cytochrome c Rabbit Polyclonal antibody. Positive WB detected in rat skeletal muscle tissue, MCF7 cells, mouse kidney tissue, mouse skeletal muscle tissue, NIH/3T3 cells, rat liver tissue. Positive IHC detected in human colon cancer tissue, human breast cancer tissue, human liver tissue. Observed molecular weight by Western-blot: 12-15 kDa

## Preparation

This antibody was obtained by immunization of Cyt<sup>®</sup>Chrome c recombinant protein (Accession Number: NM\_018947). Purification method: Antigen affinity purified.

## Formulation

PBS with 0.1% sodium azide and 50% glycerol pH 7.3.

## Storage

Store at -20°C. DO NOT ALIQUOT

## Clonality

Polyclonal

## Ig Type

Rabbit IgG

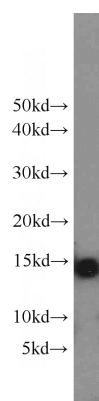
## Applications

ELISA, IHC, WB

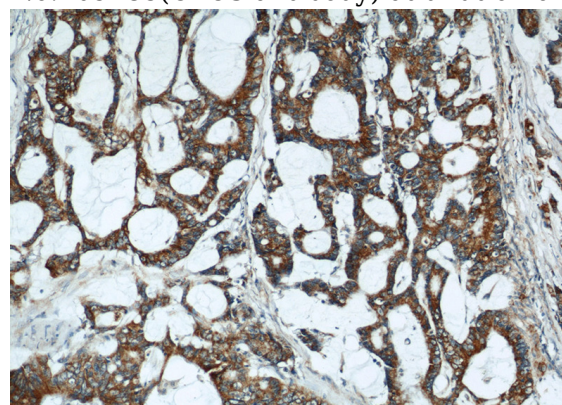
## Dilutions

Recommended Dilution:

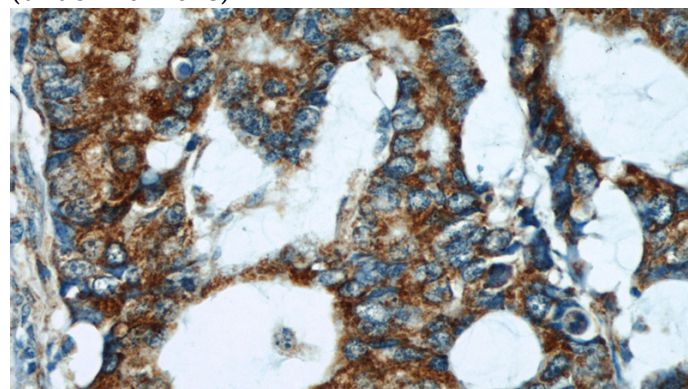
## Validations



rat skeletal muscle tissue were subjected to SDS PAGE followed by western blot with Catalog No:109785(CYCS antibody) at dilution of 1:800



Immunohistochemical of paraffin-embedded human colon cancer using Catalog No:109785(CYCS antibody) at dilution of 1:50 (under 10x lens)



Immunohistochemical of paraffin-embedded

# Cytochrome c antibody



Catalog Number: 109785

---

human colon cancer using Catalog

No:109785(CYCS antibody) at dilution of 1:50  
(under 40x lens)