

# HDDC3 antibody



Catalog Number: 111385

## Product name

HDDC3 antibody

## Immunogen

[Human HDDC3 Recombinant protein \(GST tag & His tag\)](#)

## Specificity

Human, Mouse, Rat; other species not tested.

## Antibody description

HDDC3 Rabbit Polyclonal antibody. Positive IHC detected in human kidney tissue, human brain tissue. Positive IP detected in HeLa cells. Positive WB detected in HeLa cells, human heart tissue, mouse heart tissue, mouse kidney tissue, mouse lung tissue, mouse pancreas tissue, mouse testis tissue. Observed molecular weight by Western-blot: 22-25 kDa

## Preparation

This antibody was obtained by immunization of HDDC3 recombinant protein (Accession Number: NM\_198527). Purification method: Antigen affinity purified.

## Formulation

PBS with 0.02% sodium azide and 50% glycerol pH 7.3.

## Storage

Store at -20°C. DO NOT ALIQUOT

## Clonality

Polyclonal

## Ig Type

Rabbit IgG

## Applications

ELISA, WB, IHC, IP

## Dilutions

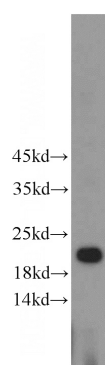
Recommended Dilution:

WB: 1:500-1:5000

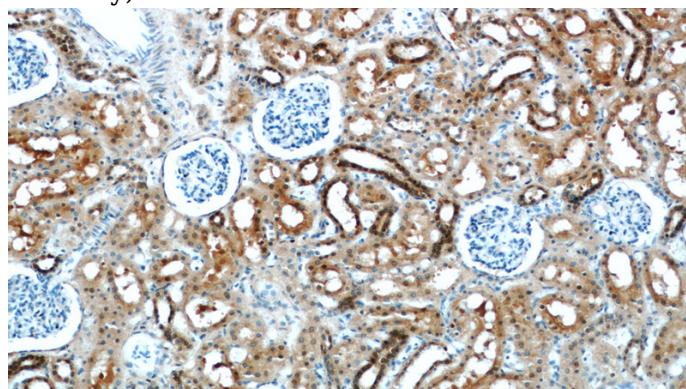
IP: 1:200-1:2000

IHC: 1:20-1:200

## Validations



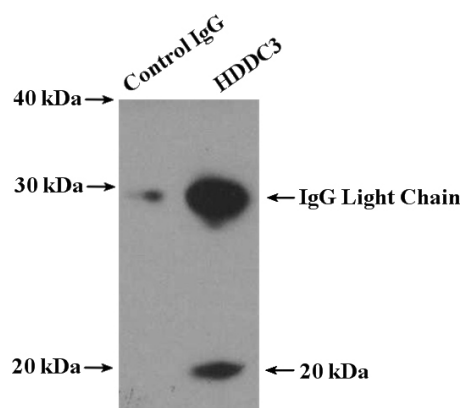
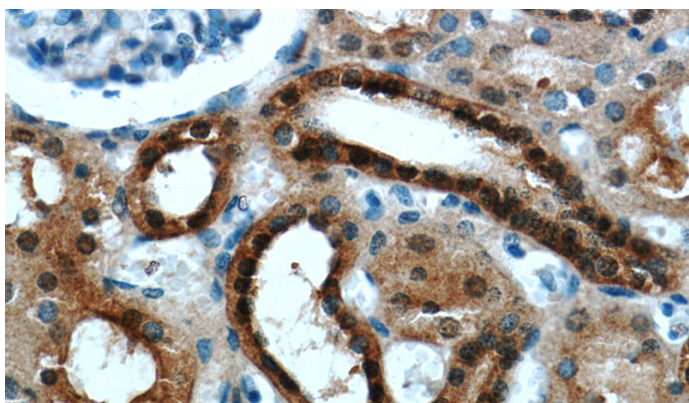
HeLa cells were subjected to SDS PAGE followed by western blot with Catalog No:111385(HDDC3 antibody) at dilution of 1:500



Immunohistochemical of paraffin-embedded human kidney using Catalog No:111385(HDDC3 antibody) at dilution of 1:100 (under 10x lens)

# HDDC3 antibody

Catalog Number: 111385



Immunohistochemical of paraffin-embedded human kidney using Catalog No:111385(HDDC3 antibody) at dilution of 1:100 (under 40x lens)

IP Result of anti-HDDC3 (IP:Catalog No:111385, 4ug; Detection:Catalog No:111385 1:500) with HeLa cells lysate 3400ug.