

# IGFBP2 antibody



Catalog Number: 111685

## Product name

IGFBP2 antibody

IP: 1:200-1:1000

IHC: 1:20-1:200

## Specificity

Human, Mouse; other species not tested.

## Antibody description

IGFBP2 Rabbit Polyclonal antibody. Positive WB detected in MCF7 cells. Positive IP detected in SH-SY5Y cells. Positive IHC detected in human prostate cancer tissue. Observed molecular weight by Western-blot: 36kd

## Preparation

This antibody was obtained by immunization of IGFBP2 recombinant protein (Accession Number: NM\_000597). Purification method: Antigen affinity purified.

## Formulation

PBS with 0.1% sodium azide and 50% glycerol pH 7.3.

## Storage

Store at -20°C. DO NOT ALIQUOT

## Clonality

Polyclonal

## Ig Type

Rabbit IgG

## Applications

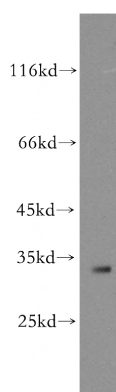
ELISA, WB, IHC, IP

## Dilutions

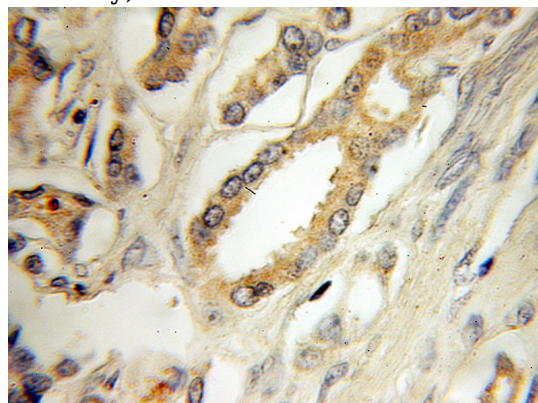
Recommended Dilution:

WB: 1:200-1:2000

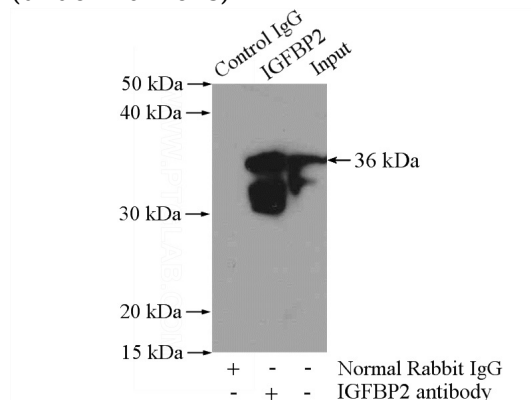
## Validations



MCF7 cells were subjected to SDS PAGE followed by western blot with Catalog No:111685(IGFBP2 antibody) at dilution of 1:300



Immunohistochemical of paraffin-embedded human prostate cancer using Catalog No:111685(IGFBP2 antibody) at dilution of 1:50 (under 10x lens)



IP Result of anti-IGFBP2 (IP:Catalog No:111685,

# IGFBP2 antibody



Catalog Number: 111685

---

4ug; Detection:Catalog No:111685 1:300) with SH-SY5Y cells lysate 1200ug.