

# ATF4 antibody

Catalog Number: 108285

## Product name

ATF4 antibody

## Immunogen

[Human ATF4 Recombinant protein \(GST tag\)](#)

## Specificity

Human, Mouse, Rat; other species not tested.

## Antibody description

ATF4 Rabbit Polyclonal antibody. Positive IP detected in HEK-293 cells. Positive WB detected in A431 cells, DU 145 cells, HEK-293 cells, mouse kidney tissue, rat brain tissue, SGC-7901 cells. Positive FC detected in MCF-7 cells. Positive IHC detected in human breast cancer tissue. Observed molecular weight by Western-blot: 50-58 kDa, 35-38 kDa

## Preparation

This antibody was obtained by immunization of ATF4 recombinant protein (Accession Number: XM\_017028807). Purification method: Antigen affinity purified.

## Formulation

PBS with 0.1% sodium azide and 50% glycerol pH 7.3.

## Storage

Store at -20°C. DO NOT ALIQUOT

## Clonality

Polyclonal

## Ig Type

Rabbit IgG

## Applications

ELISA, WB, IHC, IP, FC

## Dilutions

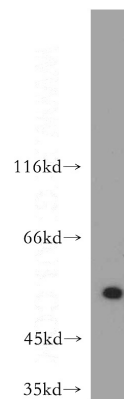
Recommended Dilution:

WB: 1:200-1:2000

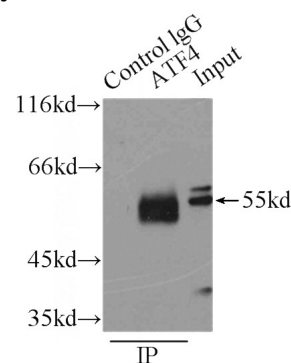
IP: 1:200-1:1000

IHC: 1:20-1:200

## Validations



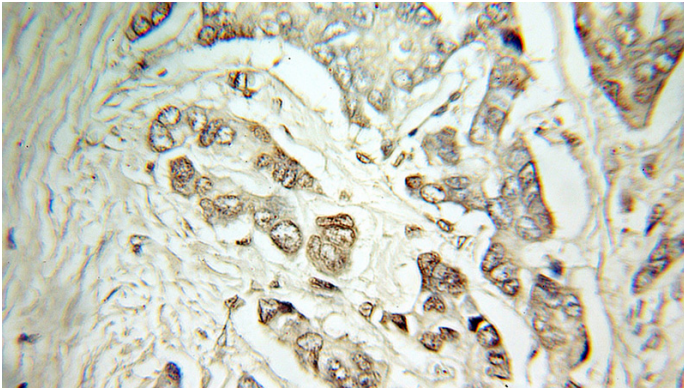
A431 cells were subjected to SDS PAGE followed by western blot with Catalog No:108285(ATF4 antibody) at dilution of 1:500



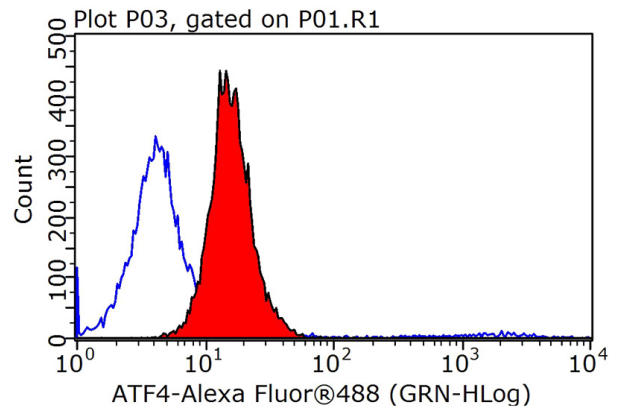
IP Result of anti-ATF4 (IP:Catalog No:108285, 3ug; Detection:Catalog No:108285 1:400) with HEK-293 cells lysate 6000ug.

# ATF4 antibody

Catalog Number: 108285



Immunohistochemical of paraffin-embedded human breast cancer using Catalog No:108285(ATF4 antibody) at dilution of 1:100 (under 10x lens)



1X10<sup>6</sup> MCF-7 cells were stained with 0.2ug ATF4 antibody (Catalog No:108285, red) and control antibody (blue). Fixed with 90% MeOH blocked with 3% BSA (30 min). Alexa Fluor 488-conjugated AffiniPure Goat Anti-Rabbit IgG(H+L) with dilution 1:1000.