

Anti-SAE1 Rabbit antibody



Catalog Number: 168885

Product name

Anti-SAE1 Rabbit antibody

Specificity

Human, Mouse

Antibody description

SAE1 Rabbit monoclonal antibody

Preparation

Antigen: A synthetic peptide of human SAE1

Formulation

50nM Tris-Glycine(pH 7.4), 0.15M NaCl, 40%Glycerol, 0.01% sodium azide and 0.05% BSA.

Storage

Store at 4°C short term. Store at -20°C long term. Avoid freeze / thaw cycle.

Clonality

Monoclonal

Ig Type

Rabbit IgG

Applications

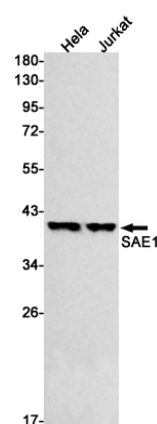
WB, ICC/IF

Dilutions

WB: 1/1000-1/5000

ICC/IF: 1/20

Validations



Western blot detection of SAE1 in HeLa, Jurkat cell lysates using SAE1 Rabbit mAb(1:500 diluted). Predicted band size: 39kDa. Observed band size: 39kDa.