

**Product name**

WTX antibody

**Specificity**

Human, Mouse; other species not tested.

**Antibody description**

WTX Rabbit Polyclonal antibody. Positive IHC detected in human kidney tissue, mouse stomach tissue.

**Preparation**

This antibody was obtained by immunization of Peptide (Accession Number: NM\_152424).  
Purification method: Antigen affinity purified.

**Formulation**

PBS with 0.02% sodium azide and 50% glycerol pH 7.3.

**Storage**

Store at -20°C. DO NOT ALIQUOT

**Clonality**

Polyclonal

**Ig Type**

Rabbit IgG

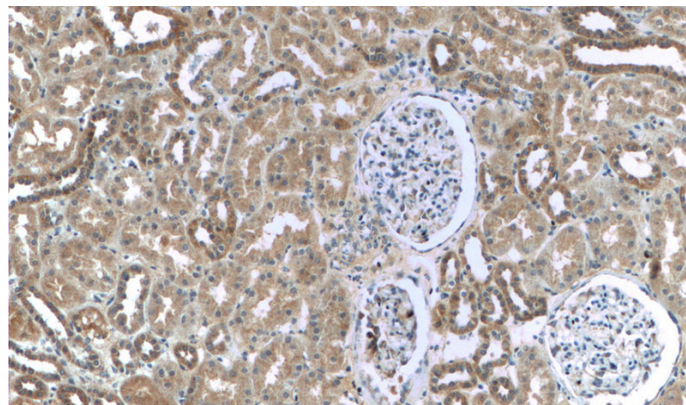
**Applications**

ELISA, IHC

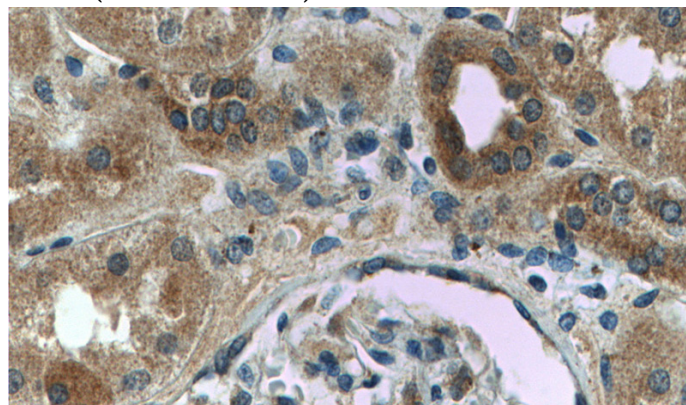
**Dilutions**

Recommended Dilution:

IHC: 1:20-1:200

**Validations**

Immunohistochemistry of paraffin-embedded human kidney tissue slide using Catalog No:116975(FAM123B Antibody) at dilution of 1:200 (under 10x lens)



Immunohistochemistry of paraffin-embedded human kidney tissue slide using Catalog No:116975(FAM123B Antibody) at dilution of 1:200 (under 40x lens)