

TAB2 antibody



Catalog Number: 115965

Product name

TAB2 antibody

WB: 1:200-1:2000

IP: 1:200-1:2000

Specificity

Human, Mouse, Rat; other species not tested.

IHC: 1:20-1:200

IF: 1:20-1:200

Antibody description

TAB2 Rabbit Polyclonal antibody. Positive WB detected in HepG2 cells, human liver tissue, L02 cells. Positive IP detected in HepG2 cells. Positive IF detected in HepG2 cells. Positive IHC detected in human malignant melanoma tissue. Positive FC detected in HepG2 cells. Observed molecular weight by Western-blot: 77 kDa

Preparation

This antibody was obtained by immunization of TAB2 recombinant protein (Accession Number: XM_047418490). Purification method: Antigen affinity purified.

Formulation

PBS with 0.02% sodium azide and 50% glycerol pH 7.3.

Storage

Store at -20°C. DO NOT ALIQUOT

Clonality

Polyclonal

Ig Type

Rabbit IgG

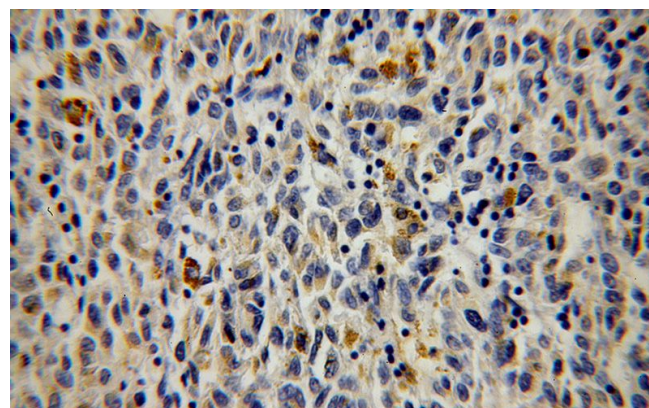
Applications

ELISA, IHC, IF, WB, FC, IP

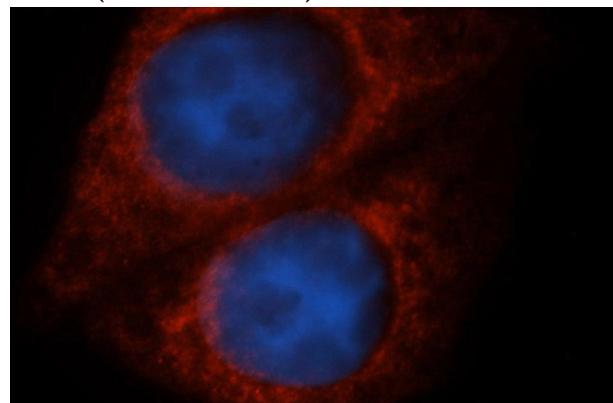
Dilutions

Recommended Dilution:

Validations



Immunohistochemical of paraffin-embedded human malignant melanoma using Catalog No:115965(MAP3K7IP2 antibody) at dilution of 1:100 (under 40x lens)



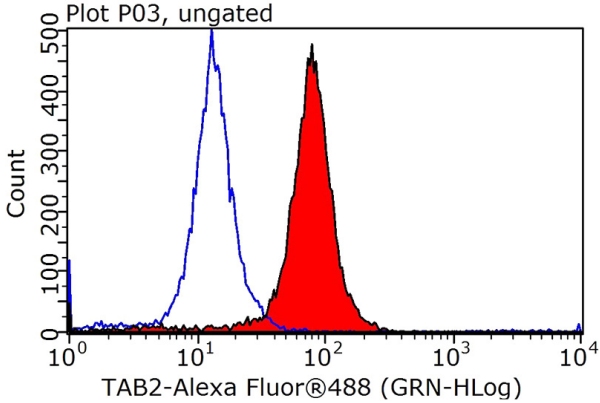
Immunofluorescent analysis of HepG2 cells, using MAP3K7IP2 antibody Catalog No:115965 at 1:50 dilution and Rhodamine-labeled goat anti-rabbit IgG (red). Blue pseudocolor = DAPI (fluorescent)

TAB2 antibody



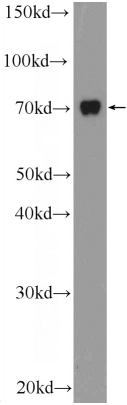
Catalog Number: 115965

IP Result of anti-MAP3K7IP2 (IP:Catalog No:115965, 4ug; Detection:Catalog No:115965 1:600) with HepG2 cells lysate 3600ug.

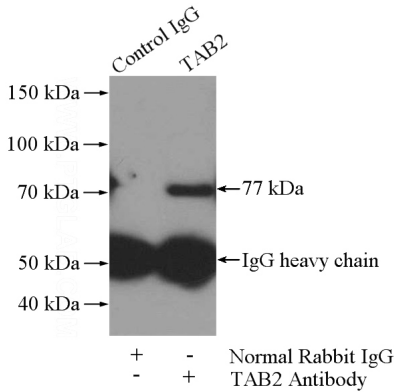


1X10⁶ HepG2 cells were stained with 0.2ug MAP3K7IP2 antibody (Catalog No:115965, red) and control antibody (blue). Fixed with 90% MeOH blocked with 3% BSA (30 min). Alexa Fluor 488-conjugated AffiniPure Goat Anti-Rabbit IgG(H+L) with dilution 1:1000.

HepG2 cells were subjected to SDS PAGE followed by western blot with Catalog No:115965(MAP3K7IP2 Antibody) at dilution of



DNA dye).



1:600