

# S100A8 antibody

Catalog Number: 114965

## Product name

S100A8 antibody

IHC: 1:20-1:200

## Specificity

Human, Mouse; other species not tested.

## Antibody description

S100A8 Rabbit Polyclonal antibody. Positive WB detected in K-562 cells, A375 cells, A431 cells, A549 cells, COLO 320 cells, human serum tissue. Positive IHC detected in human stomach cancer tissue, human oesophagus tissue. Observed molecular weight by Western-blot: 9 kDa

## Preparation

This antibody was obtained by immunization of S100A8 recombinant protein (Accession Number: NM\_002964). Purification method: Antigen affinity purified.

## Formulation

PBS with 0.02% sodium azide and 50% glycerol pH 7.3.

## Storage

Store at -20°C. DO NOT ALIQUOT

## Clonality

Polyclonal

## Ig Type

Rabbit IgG

## Applications

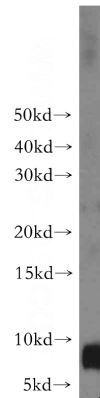
ELISA, WB, IHC

## Dilutions

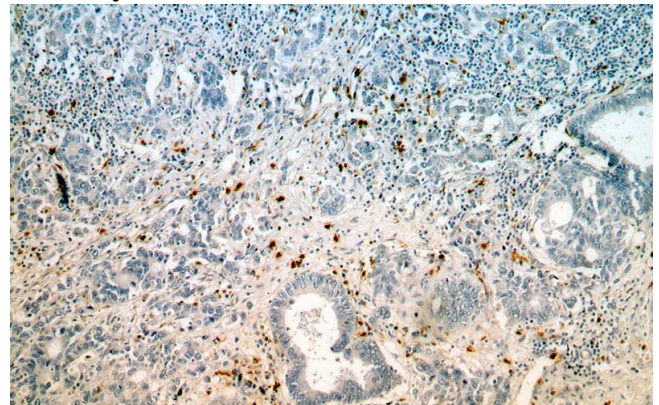
Recommended Dilution:

WB: 1:500-1:5000

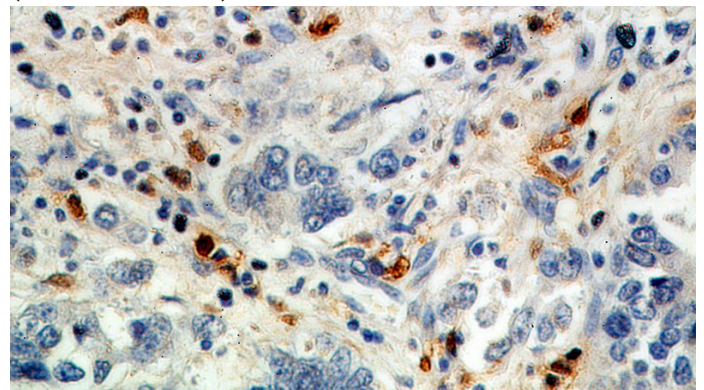
## Validations



K-562 cells were subjected to SDS PAGE followed by western blot with Catalog No:114965(S100A8 antibody) at dilution of 1:1000



Immunohistochemical of paraffin-embedded human stomach cancer using Catalog No:114965(S100A8 antibody) at dilution of 1:100 (under 10x lens)



Immunohistochemical of paraffin-embedded human stomach cancer using Catalog No:114965(S100A8 antibody) at dilution of 1:100

# S100A8 antibody



Catalog Number: 114965

---

(under 40x lens)